



DIVERSITY, EQUITY & INCLUSION

Spain Desk research
Ipsos & Google Spain
March 2022

Index

[DEMOGRAPHICS & FUTURE TRENDS](#)

[LOCATION](#)

[MIGRATION](#)

[ETHNICITY, NATIONALITY](#)

[GENDER, GENDER PARTY & PRESENTATION](#)

[LGTBIQ+](#)

[ATTITUDES, LIFESTYLE, VALUES](#)

[EDUCATION](#)

[SOCIO-ECONOMIC CLASS](#)

[DIGITAL EXCLUSION](#)

[\(DIS\)ABILITY](#)

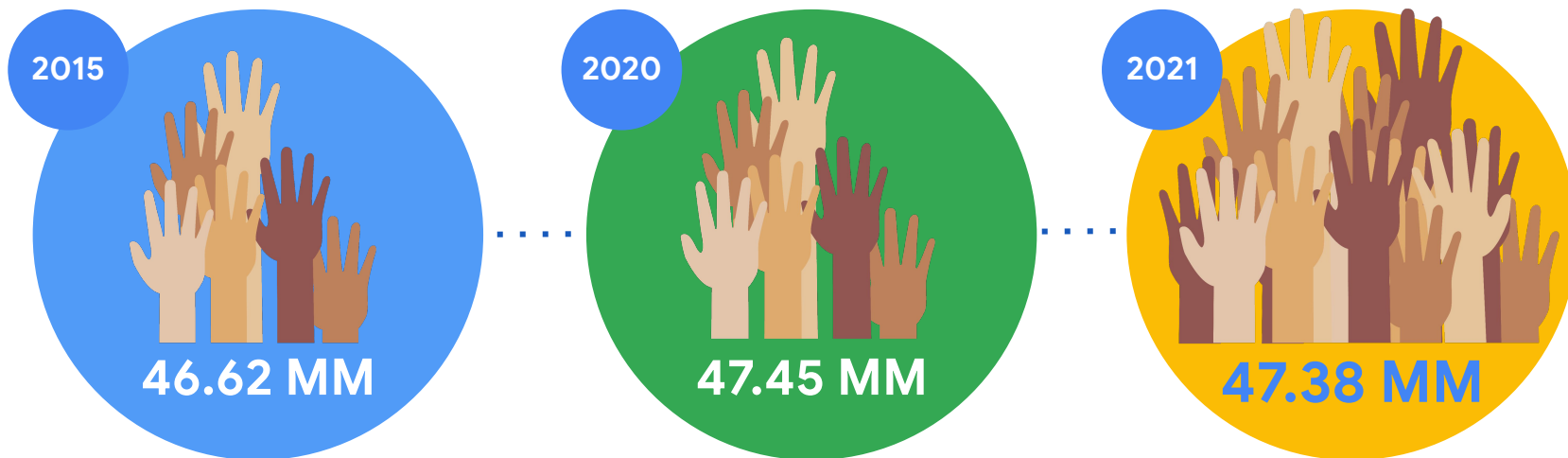
[PECULIARITIES & OUTLIERS](#)



DEMOGRAPHICS & FUTURE TRENDS

Slight decrease in Spanish population.

In 2021, the Spanish population stood at 47,385,107 inhabitants, with a decrease of 66,688 people compared to 2020. However, the rebound produced in 2018-2019 continues to maintain a trend above 47 million inhabitants.



In 2021 the progressive trend towards an aging population continues.

2015

The proportion of the population between 0-14 years old is 15.1%, while in the 15-64 year old group it is 66.5% and in the group over 65 years old it is 18.4%.

2020

In recent years, the proportion of the population under 14 years of age has clearly decreased. This means an increase in the proportion of the elderly population.

2021

In 2021, the proportion of the population under the age of 14 continues to decrease, with a slight increase in both the proportion of the adult and elderly population.



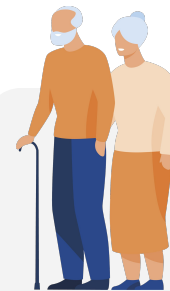
14.3%

AGED 0-14



66.1%

AGED 15-64



19.4%

AGED 65+

14.1%

AGED 0-14

66.2%

AGED 15-64

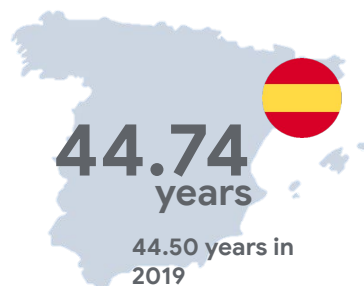
19.6%

AGED 65+

In 2021, the median age is approaching 44 years.



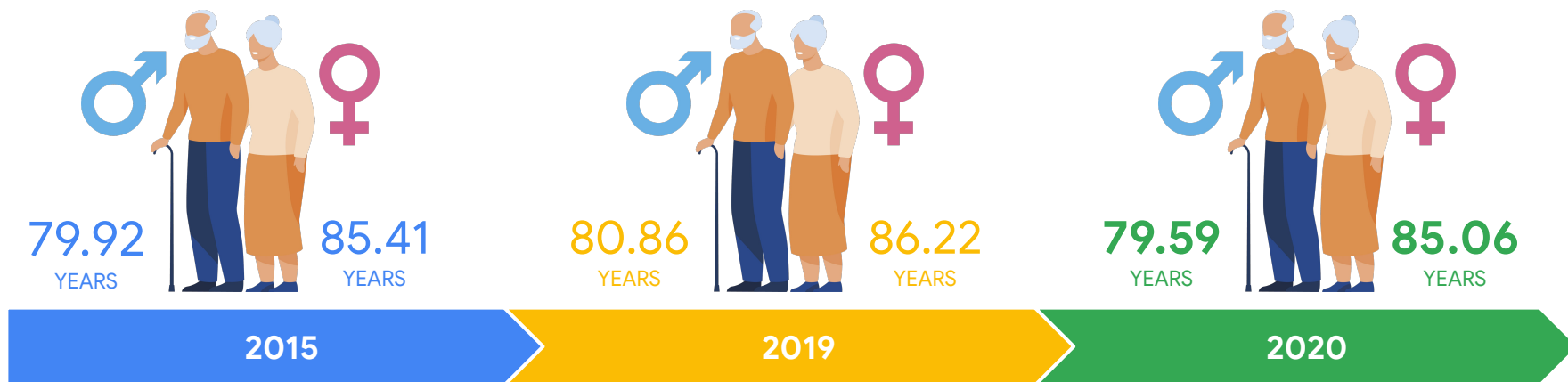
The overall average age of the Spanish population has progressively increased in the past few years, from 42.46 years in 2015 to **43.81 years in 2021**. The average age for men is below the overall average.



There is a large difference in the average age between the **Spanish and foreign populations**.

The **foreign population is younger** overall. In 2021, the age difference stood at 8.1 years.

In 2020, life expectancy at birth decreases.

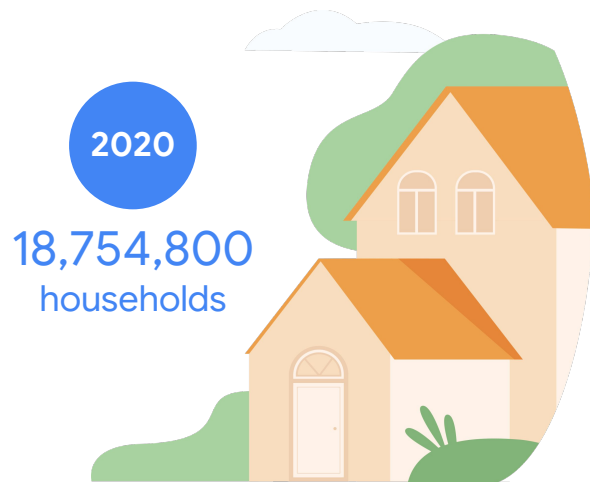


Life expectancy has gone from 82.70 years in 2015 to 83.58 years in 2019. **However, in 2020 there was a decrease to 82.33 years** (average lower than in 2015).

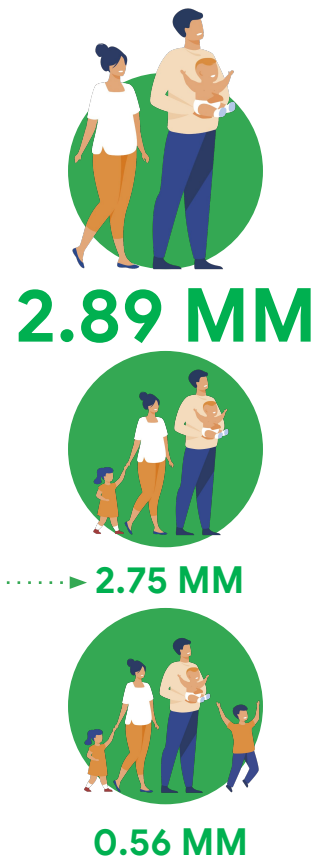
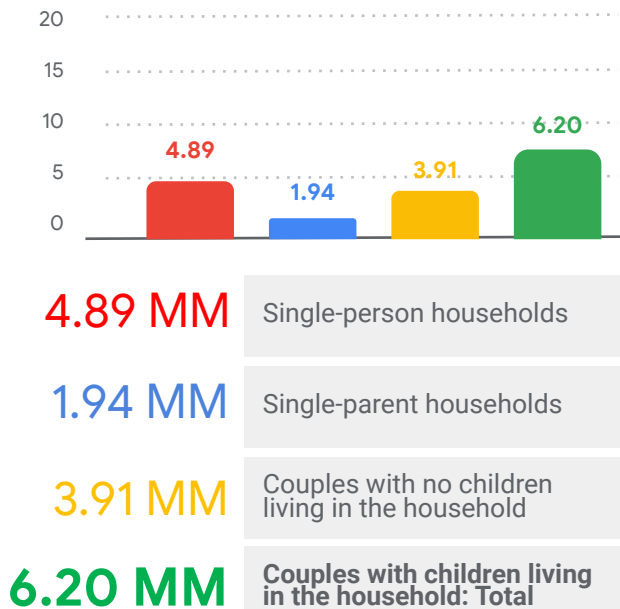
Until 2019, the growth in life expectancy occurs in both men and women. Life expectancy is significantly higher in women.

In 2020 the growth process is reversed, with a decrease of 1.27 years in men and 1.16 years in women.

**In 2020, the total number of households increased.
Couple households with children living at home continued to predominate, which remained stable.**



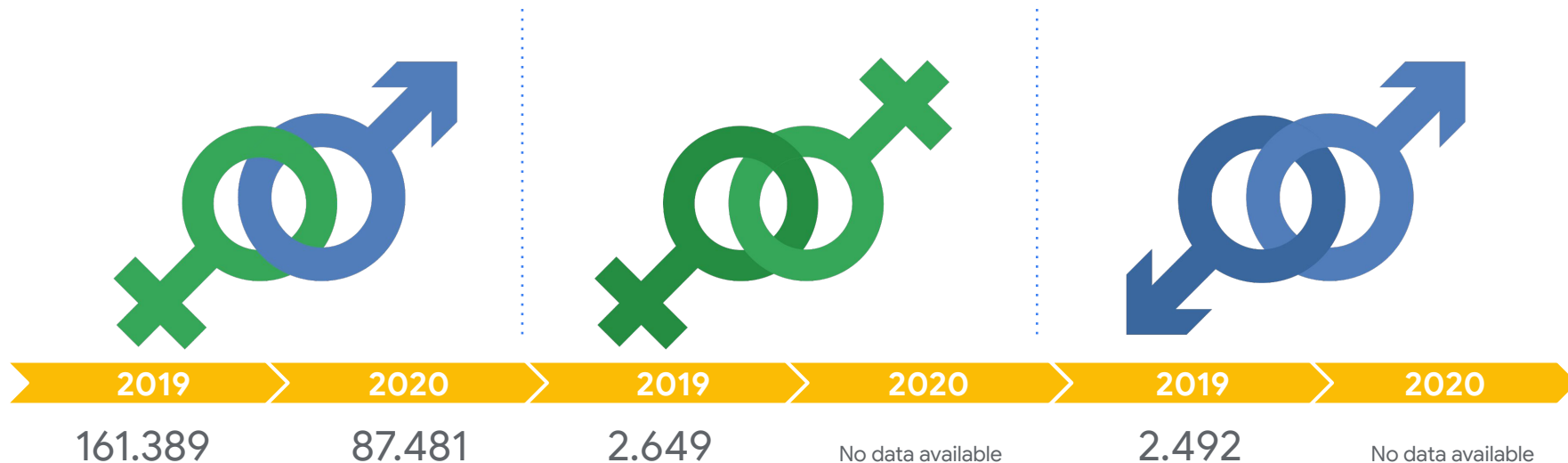
The number of households in Spain in 2020 increased by 129,100 households compared to 2019.



In 2020 there has been a significant decrease in the total number of marriages compared to 2019

Without a doubt, the influence of the Pandemic has been decisive.

While in 2019 a total of 166,530 marriages took place, in 2020 the figure dropped to 90,670 marriages. For 2020, there is still no data by gender on same-sex marriages, but together it is estimated that a total of 3,189 same-sex marriages took place.



In 2020 there was a significant decrease in the total number of divorces

That is: **77,200 divorces**, 15.76% less than in the previous year.

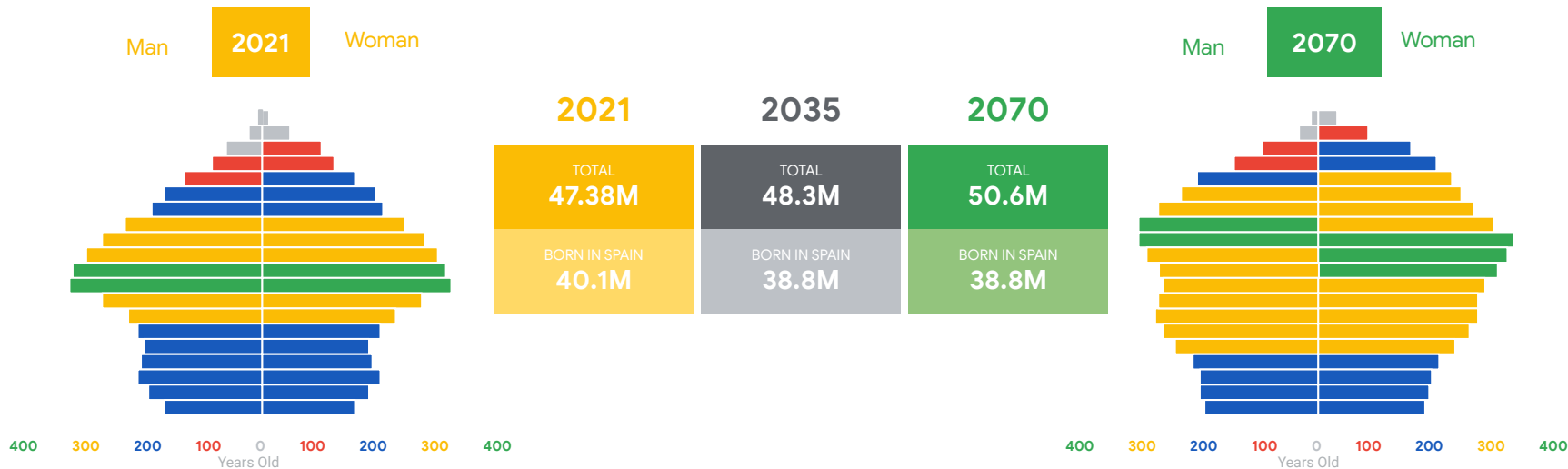
The only segment in which there is an **increase in divorces** is in **marriages between women**.



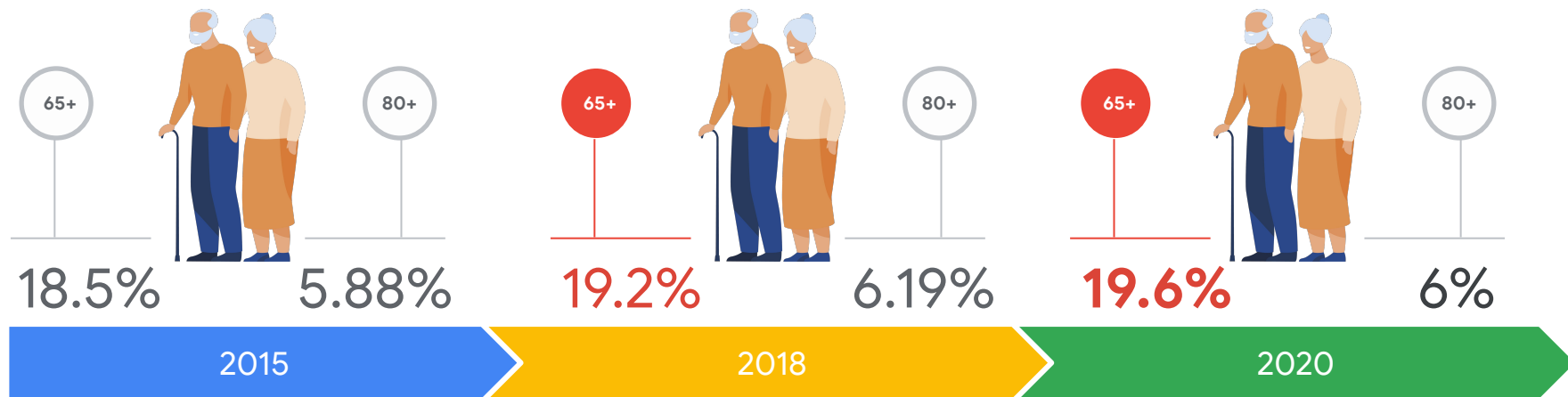
The Spanish population born in Spain is estimated to decrease progressively.

In the next 15 years (vs. 2021), Spain will increase its population by 899,372 people, reaching 48 million people in 2035. In 2070, the population will reach 50.6 million people, which is an increase of 3.2 million people.

The population born in Spain will decrease, from the current 40.1M to 38.8M in 50 years' time.



The elderly population has increased in the past few years, leading to a progressive ageing of the population.

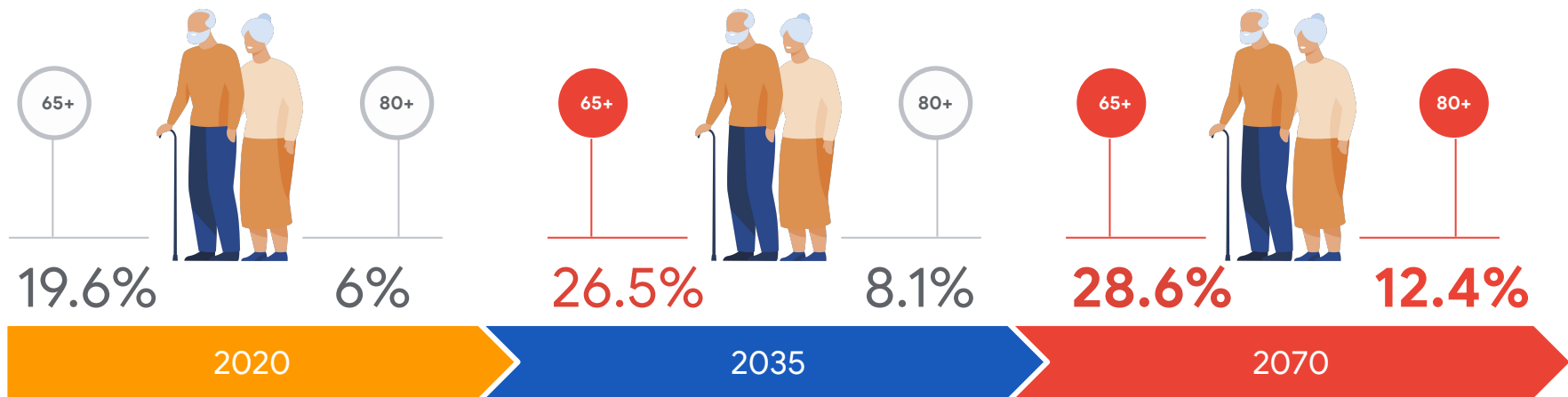


The proportion of people **aged 65+** has **increased by 1.1 percentage points** between 2015 and 2021.

The proportion is **more or less stable** in the population **aged 80+**.

Therefore, **a progressive increase of people aged 65 and over is expected.**

Population projections show a clear upward trend in the proportion of elderly people.



The proportion of people **aged 65+ will increase by 9 percentage points** between 2021 and 2070.

Similarly, the proportion of people **aged 80+ will increase by 6.4 percentage points** in the same period.

Therefore, **the population is expected to age greatly** as the proportion of older people continues to increase.

LOCATION

Spaniards are mostly urban.

Most of the population can be found in **locations with a population ranging between 100,001 and 500,000**, amounting to 11.216.339 million people in 2021.

URBAN AREAS

39.911.866 VS. 39.451.231 last year
population concentrating in
urban areas

84.1% VS. 83.9% last year
of the total population is
located in urban areas

80.525 km² VS. 80.193 km² last year
belongs to urban areas

495.6 inhabitants/km²
registered in urban areas
VS. 492 inhabitants/km² last year

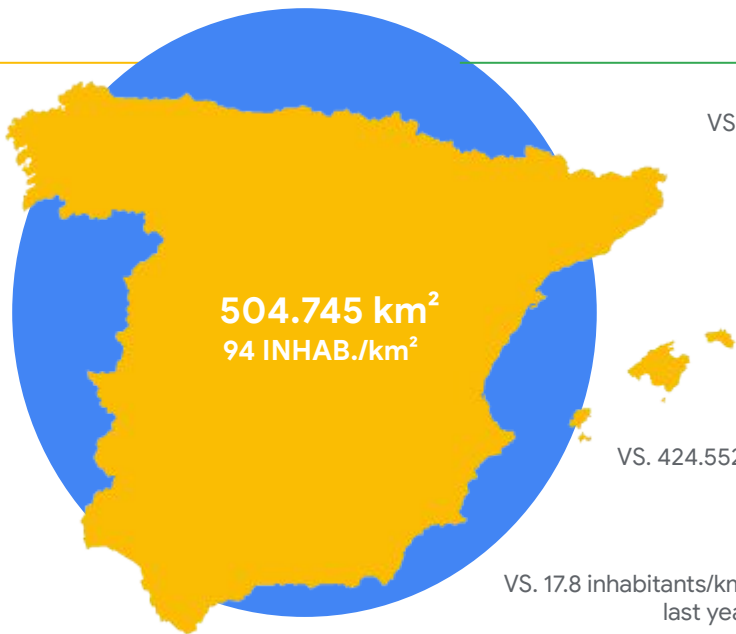
RURAL AREAS

VS. 7.574.977 last year **7.538.929**
population concentrating in
rural areas

VS. 16.1% last year **15.9%**
of the total population is
located in rural areas

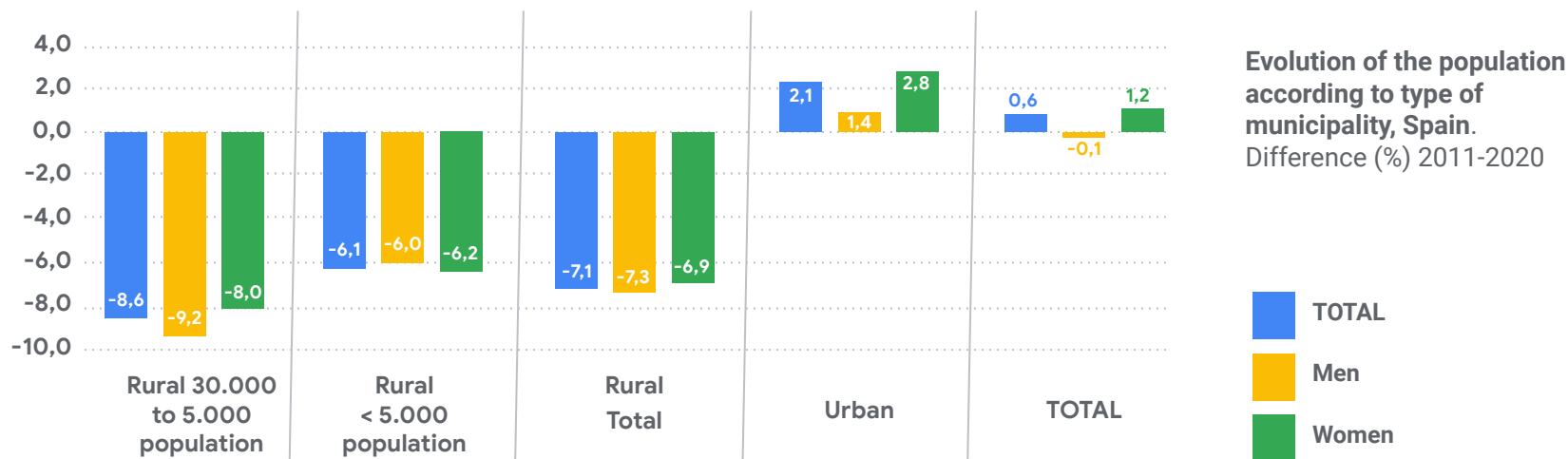
VS. 424.552 km² last year **424.220 km²**
belongs to rural areas

VS. 17.8 inhabitants/km² last year **17.8 inhabitants/km²**
registered in rural areas



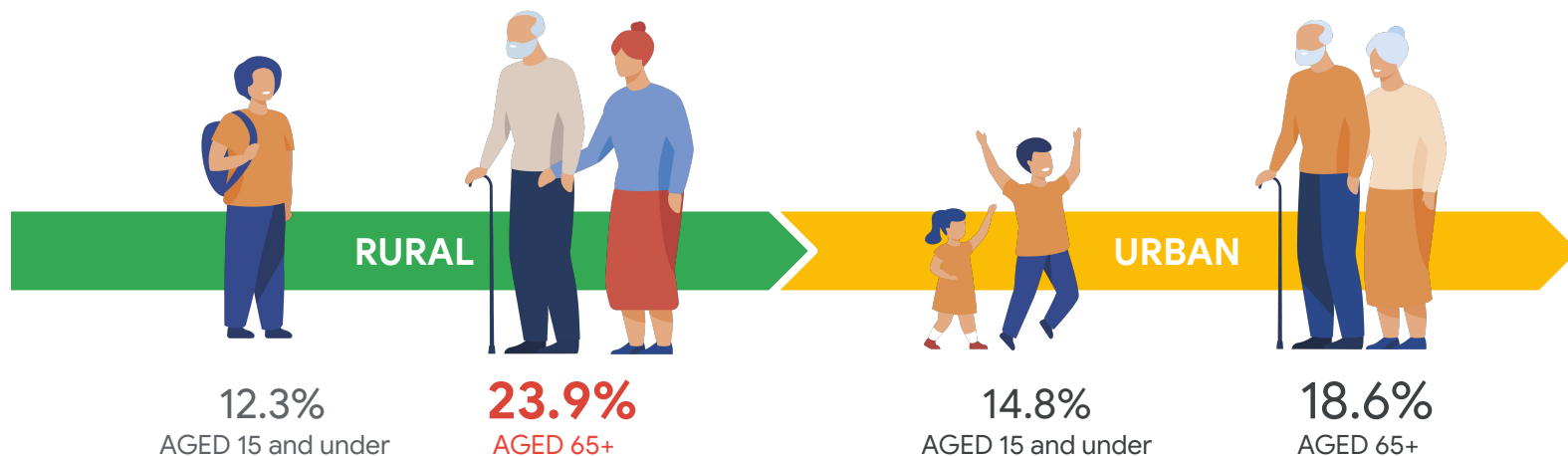
The population of rural municipalities has decreased by 7.1% between 2011 and 2020 in Spain.

The evolution between 2011-2020 has been different in urban municipalities, where it has risen by 2.1%, compared to rural ones, in which it has decreased by 7.1%. Within the rural municipalities, the population has decreased more in the larger ones than in the small ones, with a decrease of 8.6% compared to 6.1%.



The population is older in rural locations than in urban locations

In 2020, the **population aged 65 and over was 23.9% in rural areas compared to 18.6% in urban areas: there is a slight increase compared to 2019**. Among rural locations, the population in smaller locations is older, with a proportion of elderly people in excess of 26.6%, while that of young people is 11.1%. The largest rural municipalities tend to resemble (similar percentages) the urban ones in distribution of young and old.



There is a predominating need to live in owned housing

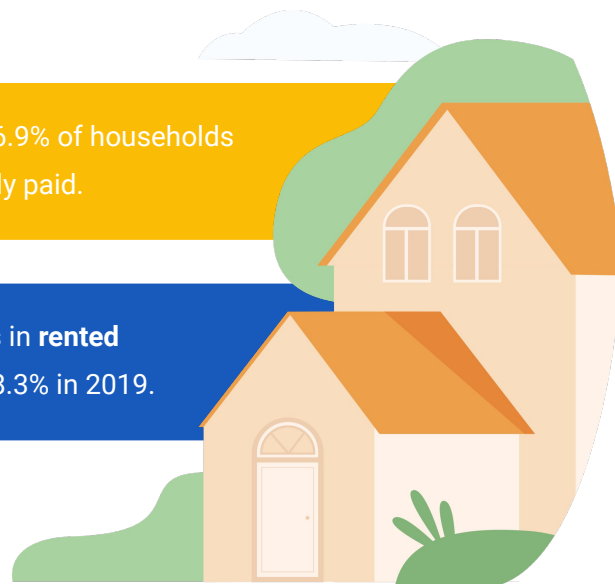
In 2020, while the **total volume of owned homes increased by 228,000 homes compared to 2019**, the **volume of rental homes decreased by 156,800 homes**. The housing tenure regime varies according to nationality. Thus, 56% of the households with some foreign member lived rented, compared to 11.7% of the households with all its members of Spanish nationality.

14.4 MM

14,413,600 households are owned. In 2020, 76.9% of households are in owned property, both mortgaged and fully paid.

3.4 MM

3,244,400 households are rented. Households in **rented** properties amounted to 17.3%, compared to 18.3% in 2019.

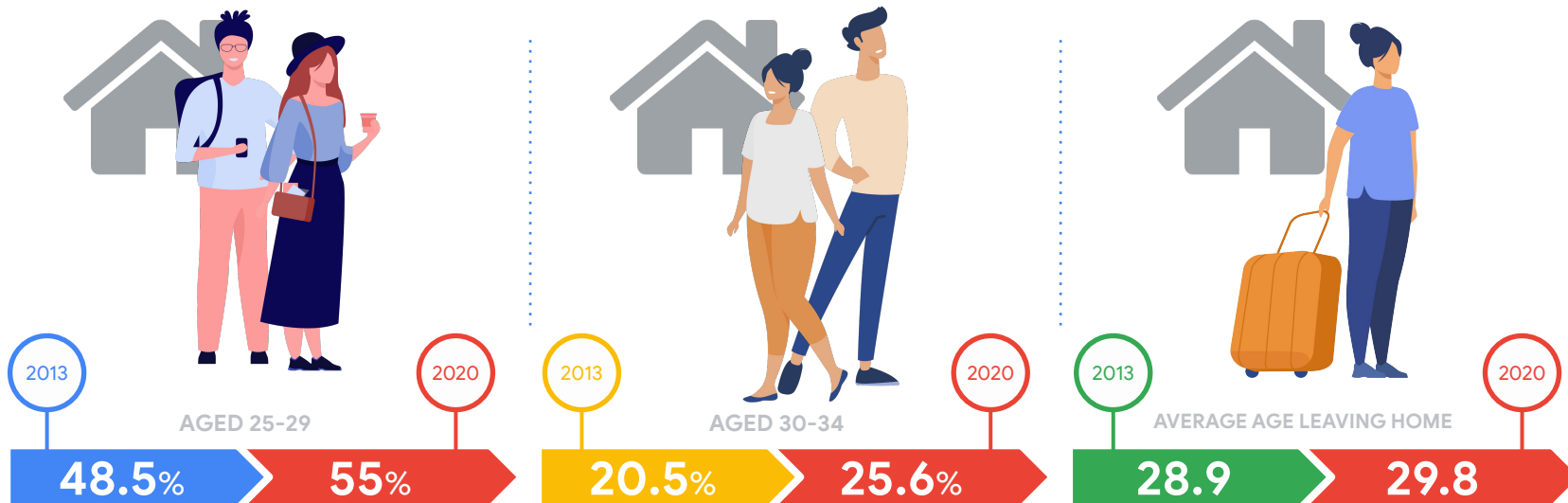


There has been an increase in young people living with their parents.

55% of young people between 25 and 29 years old lived with their parents or with one of them in 2020, compared to 52.8% in 2019. The percentage of men is higher than that of women.

For their part, the percentage of people between 30 and 34 years old who lived with their parents or with some of them it stood at 25.6%, compared to 24.5% in 2019. The percentage of men is higher than that of women.

The average age of young people to leave their parents' home and become emancipated was 29.8 years, compared to 29.5 in 2019 (well above the European average: 26.4 years).





MIGRATION

Increasing immigration trend and decreasing emigration trend.

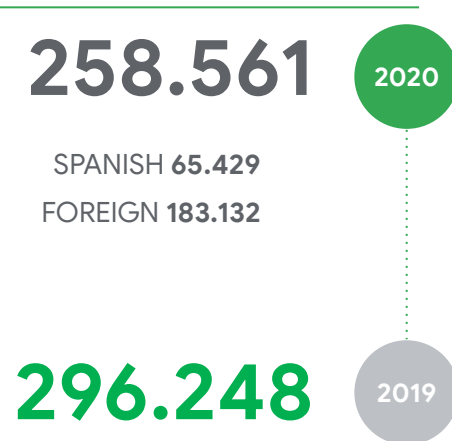
In 2015, immigration and emigration flows were very similar. From that year onwards, **the evolutionary trend in the volume of immigration shows a sharp increase until 2019.**

In 2020 there is an enormous decrease, undoubtedly due to the Covid-19 Pandemic. On the other hand, the evolution in the volume of emigrants continues its downward trend.

IMMIGRATION FLOW FROM ABROAD



EMIGRATION FLOW ABROAD



Distribution and number of immigrants-emigrants, 2020.

Number of immigrants according to country of origin: main countries by continent, 2020

UK
36.374

MOROCCO
45.464

Colombia
52.921

UNITED KINGDOM 36.374
ROMANIA 14.891
ITALY 14.258
FRANCE 14.086
GERMANY 10.670
RUSSIA 4.640
UKRAINE 4.145



ROMANIA 32.671
UNITED KINGDOM 30.484
ITALY 8.173
FRANCE 18.415
GERMANY 14.266
BULGARIA 4.924
PORTUGAL 6.407

MOROCCO 45.464
SENEGAL 5.132
ALGERIA 4.388
MALI 2.191
GHANA 1.314
GAMBIA 1.556
EQUATORIAL GUINEA 842



MOROCCO 15.933
ALGERIA 3.176
SENEGAL 1.567
EQUATORIAL GUINEA 771
NIGERIA 401
MALI 423
GAMBIA 288

COLOMBIA 52.921
VENEZUELA 32.927
PERU 19.737
ARGENTINA 19.857
BRAZIL 9.541
ECUADOR 10.058
PARAGUAY 6.596



COLOMBIA 9.582
ECUADOR 5.923
ARGENTINA 4.907
BRAZIL 4.414
PERU 3.945
VENEZUELA 4.069
BOLIVIA 2.445

HONDURAS 18.856
CUBA 7.784
NICARAGUA 9.416
EE.UU 9.909
DOMINICAN REPUBLIC 6.470
MEXICO 5.867



EE.UU 10.031
MEXICO 2.753
DOMINICAN REPUBLIC 2.904
HONDURAS 2.405
CUBA 1.552
NICARAGUA 1.132

CHINA 5.670
PAKISTAN 7.340
INDIA 2.946
PHILIPPINES 1.706
OTHER COUNTRIES ASIA 8.853
OCEANIA 1.138



CHINA 5.753
PAKISTAN 1.957
INDIA 1.309
PHILIPPINES 604
OTHER COUNTRIES ASIA 3.724
OCEANIA 928

Number of emigrants according to country of destin: main countries by continent, 2020

France
18.415

UK
30.484

Romania
32.671

In 2021, only 16% of Spanish respondents express general antipathy towards immigrants. But the perception is full of more or less positive-negative nuances that generate a paradoxical opinion.

**7%**

Spanish respondents chose immigration as one of the three most worrying topics.

**49%**

Spanish respondents think that immigration has increased a lot during the last 5 years.

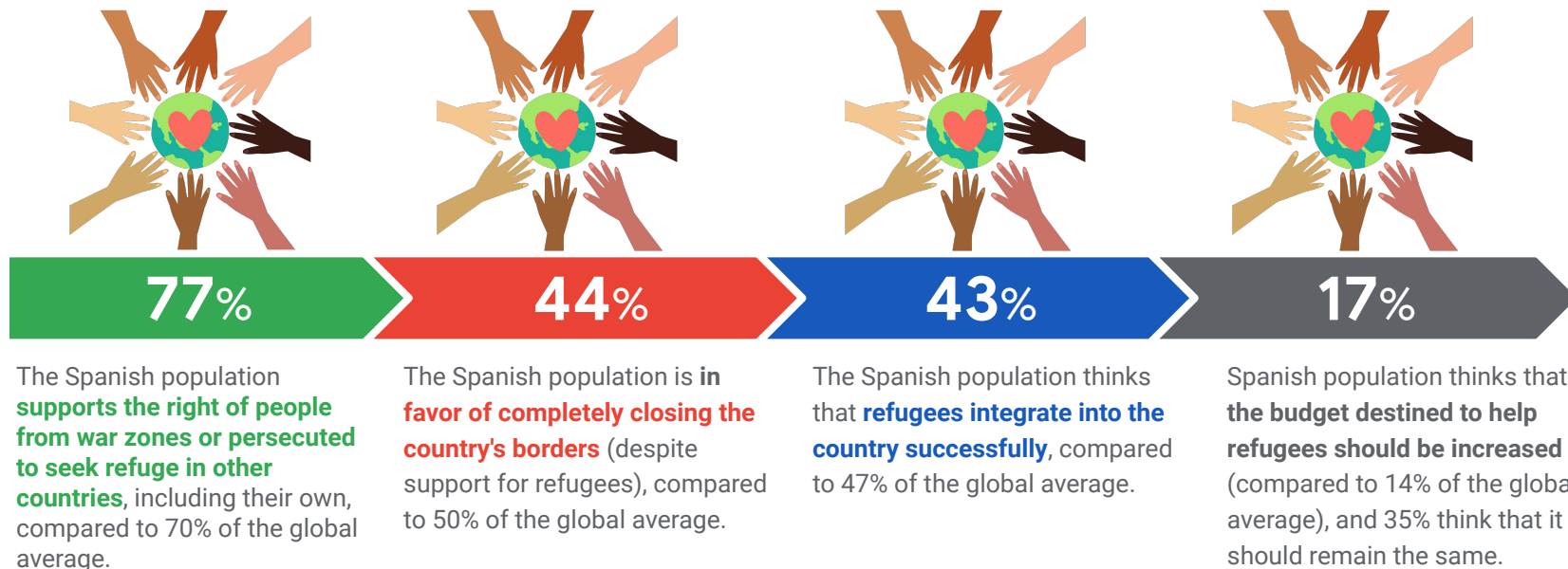
**62%**

Spanish respondents see the laws that regulate the entry and stay of foreigners in Spain as tolerant.

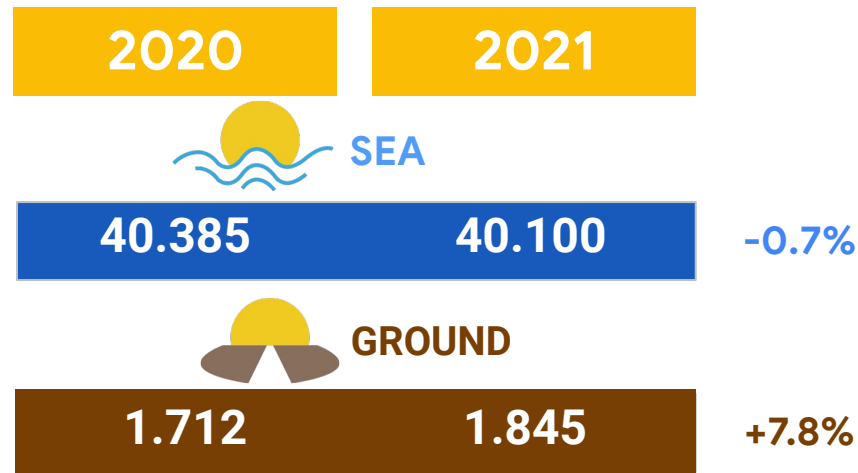
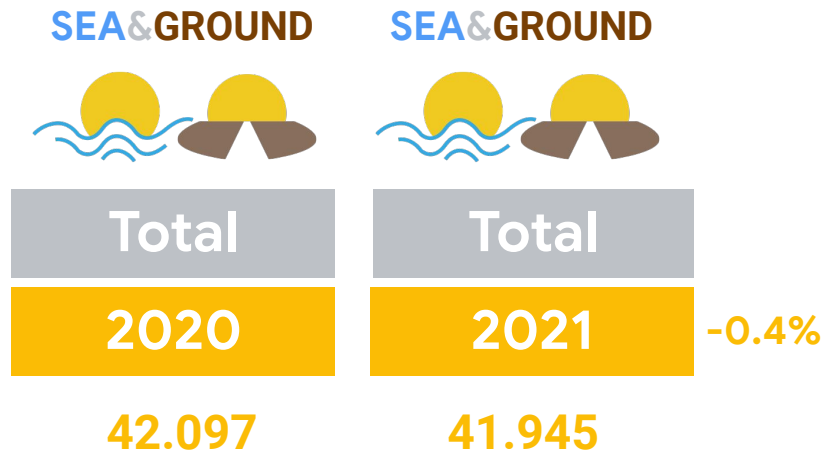
**57%**

Spanish respondents consider that immigrants receive more or much more from the State than they contribute.

In 2021 there was support for refugees, accompanied by some visible contradictions. Although it is more than likely that in 2022, with the Russian invasion of Ukraine, public opinion will eliminate certain contradictions towards greater practical solidarity.



The provisional accumulated data from January 1 to December 31, 2021 shows a slight decrease in illegal immigrants compared to 2020. In the terrestrial geographical space an increase of 7.8% is observed.

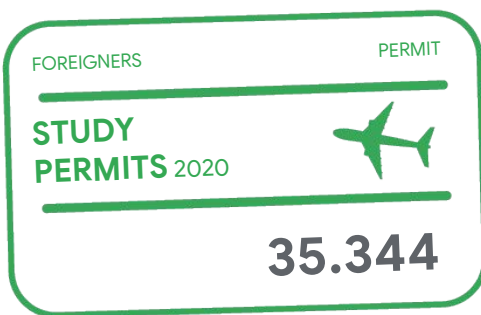





During 2020 there was a general decrease in residence permits, stays for study and nationality concessions.

As in other socio-demographic phenomena, the influence of the Covid-19 Pandemic has been fundamental in this change in trend. The greatest impact is detected in nationality concessions, going from 162,799 in 2019 to 80,148 in 2020.






	MOROCCO	113.852	16.7%
	VENEZUELA	100.938	14.8%
	ROMANIA	63.902	9.4%



	CHINA	4.436	
	U.S.	3.597	
	COLOMBIA	2.803	

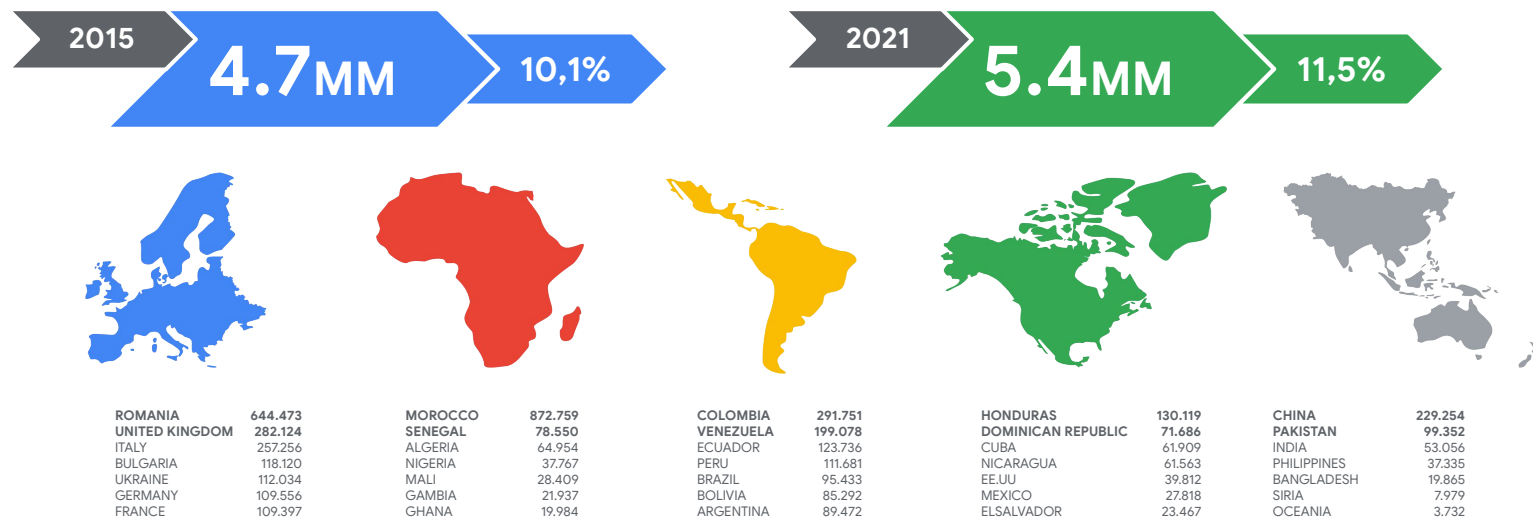


	MOROCCO	23.522
	COLOMBIA	5.309
	ECUADOR	4.831

ETHNICITY, NATIONALITY

In 2021, the foreign population amounted to 5,440,148, an increase of 5,995 people compared to the previous year and 710,504 compared to 2015.

There has also been a proportional increase, representing 11.5% of the total population in 2021. Among the foreign population, the main nationalities that stand out are Morocco, Romania and Colombia.



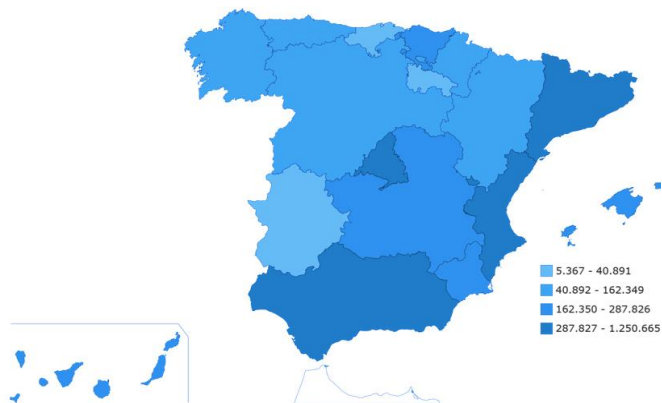
In 2021, the greatest weight of the foreign population is found in Catalonia (1,250,665), the Community of Madrid (955,122), the Valencian Community (751,616) and Andalusia (711,916).

On the other hand, if we look at the **distribution of the African population**, with a total of 1,198,573 people, **the greatest population weight is found in Catalonia** (324,995), Andalusia (201,345), the Valencian Community (133,636) and the Community of Madrid. (113,050).

2021

TOTAL FOREIGN
POPULATION BY
COMMUNITY

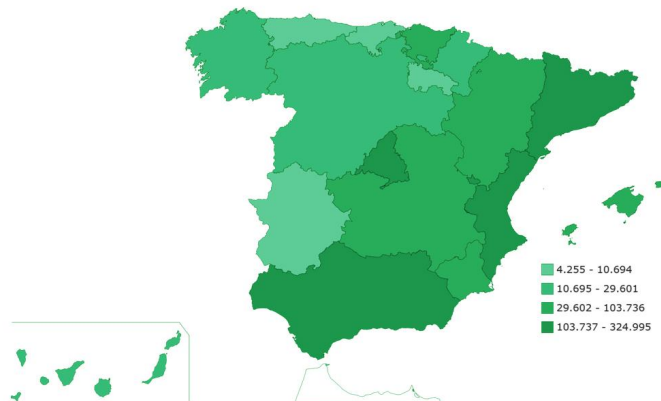
5.4 MM



2021

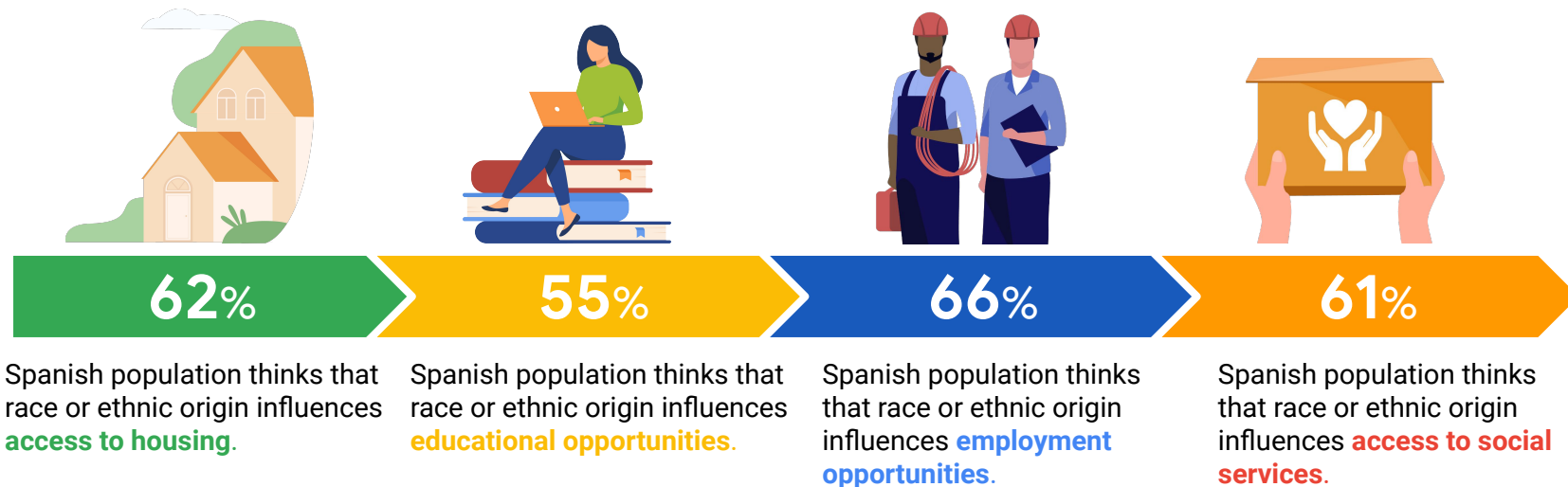
TOTAL POPULATION OF
AFRICAN ORIGIN BY
COMMUNITY

11.2MM



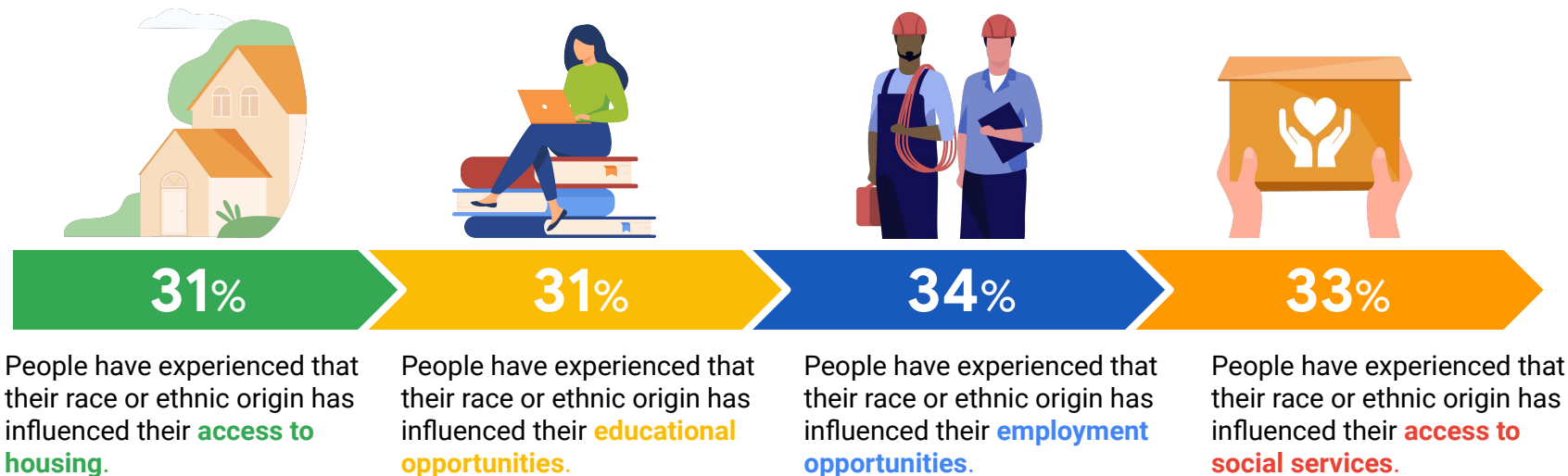
It is necessary to distinguish the general perceived belief of the population regarding the influence of race and ethnicity in limiting different social problems and the personal experience of these limitations.

In general terms, in 2021 the negative perception of the Spanish population in general is greater than the experience indicated by the affected population .
(See next slide).



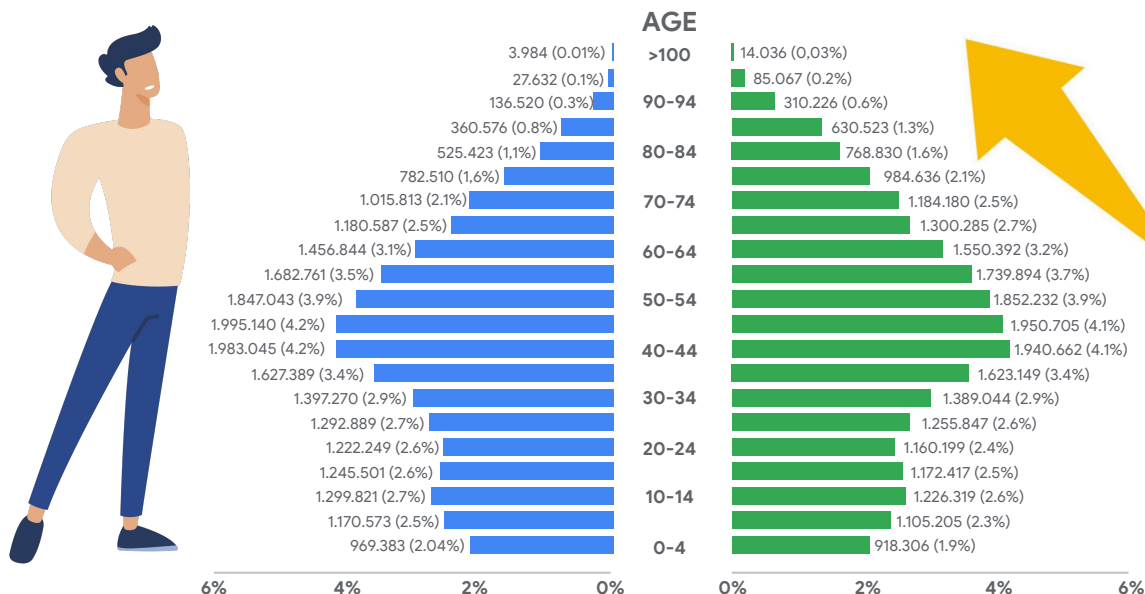
In the latter case, a relative proportion of people have experienced social limitations due to their race and ethnicity, although the indicators shown are slightly below the global average.

Impact of own race, ethnicity, or national origin on one's opportunities: personal experience in 2021.



GENDER, GENDER PARITY & REPRESENTATION

Greater proportion of women in advanced ages, from 70 years.



In 2021, The largest proportion of people by age can be found in the range between 40 and 54.

The female proportion is somewhat lower than the male at younger ages, but it is significantly higher at older ages, especially from approximately 70-74 years old.

There are gender differences in the context of unemployment

In 2021, the female unemployment rate has decreased by 0.7 points to stand at 16.7%, compared to 2020. The young population continues to be the most affected, that is: the 16-19 age group (51, 9%), followed by the 20-24 age group (32.4%).

WOMEN OF WORKING AGE (AGED 16+)
2021



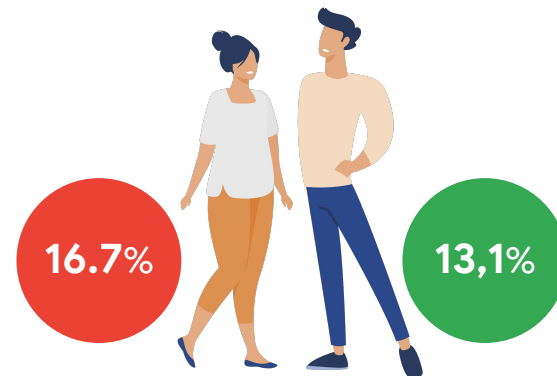
46.1% of the total employed population is a woman, an increase of 0.4 points compared to 2020.

EMPLOYMENT RATE
2021



53.7% of women of working age are working.

UNEMPLOYMENT RATE
2021

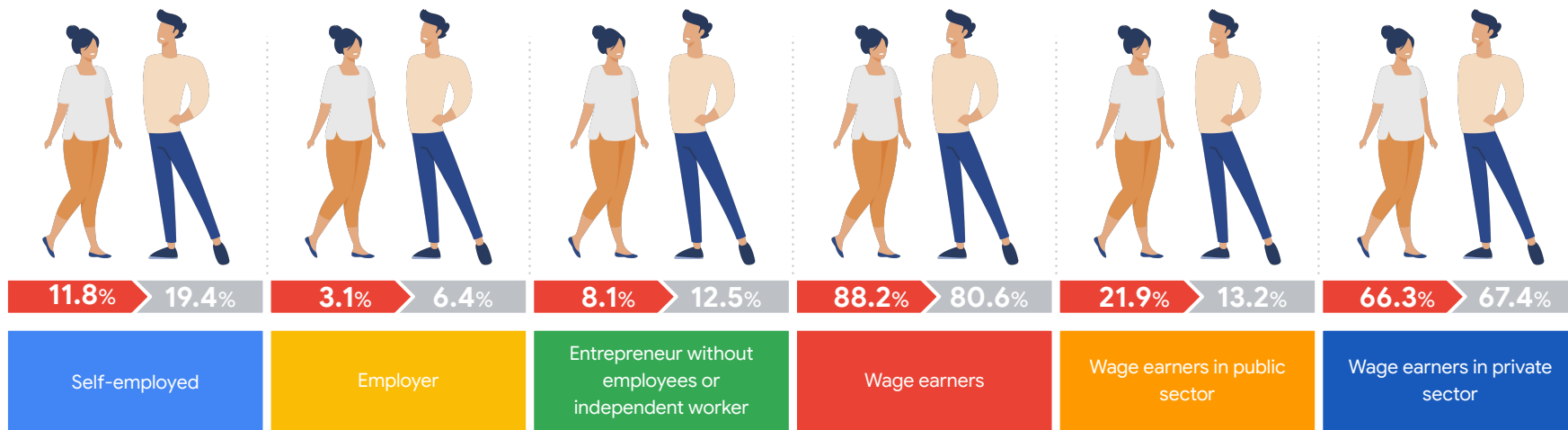


16.7% of women of working age are unemployed.

The largest proportion of workers is found in the area of wage earners, with the proportion of women being greater than that of men.

In other areas with greater independence from higher management, the percentage of the female working population is lower than that of men, and this is shown in the area of self-employed workers or the business class.

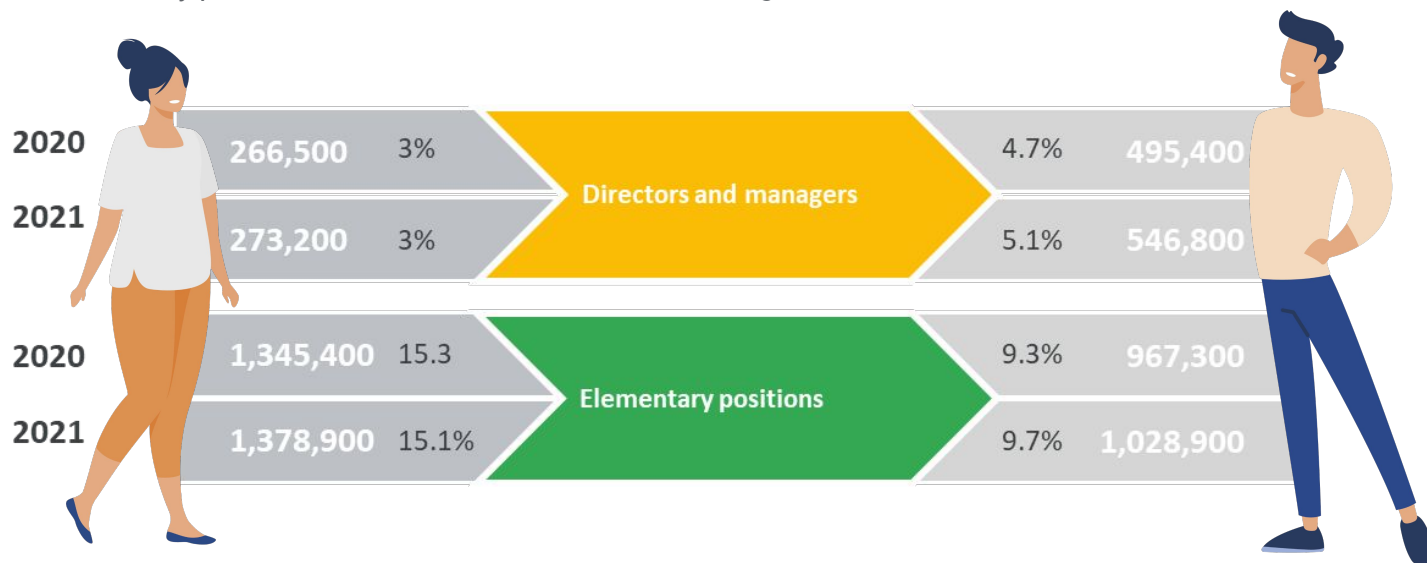
Employed population by professional situation, 2021 (Q4)



Women are at a disadvantage in labour as regards the number of people employed by professional status, for higher and elementary positions.

The following example shows that in 2021 a clear disadvantage of the female population in the labor structure continues to prevail.

At higher levels, like directors and managers, the number of women employed is 273,200 compared to 546,800 men. In the sphere of elementary positions, the number of women is much higher than the number of men.



Women are at a disadvantage in labour, in regard to part-time employment.

Differences between men and women in regard to **part-time employment** also show the **disadvantaged position of the female population**. In 2021, this situation remains intact despite a relative decline.

The most significant figure is that 22.4% of all employed women work part-time, compared to 6.5% of all employed men.



Concern for gender-based income inequality and wage gap.

Significantly, the main **concern** of Spanish people **regarding inequality** is in regard to income inequality. Indeed, **there are still large wage differences between men and women in Spain.**



58%
SPAIN

In 2021, **58% Spanish people consider concerns about the gender pay gap are a response to a real problem.**



50%
GLOBAL

21.682,02 €

In 2019, the **average annual wage in Spain** was 24,395.98 euros. The average annual wage for women was **80.5% of men's** annual wage.

26.934,39 €

55-64 years old

18.2%
2019

Wage gap between women and men. In 2019, the **gender gap in hourly wages** increases with age, going from a value of 4.6 in the group of workers between 25 and 34 years of age to a value of **18.2 in the group of workers from 55 to 64 years.**

At the lowest level of education attained (primary education) the average income is 10.402 euros. The average net disposable income per person in Spanish households was approximately 12.232 euros (2020). Both concepts shall be understood as income. Data: salary (male-female)

Gender inequality and feminism still have minority detractors among the population

In 2022, a majority of the population believes that gender inequality exists, but there are still minorities that reject this reality and other aspects related to feminism.



of Spanish people is strongly disagree or tend to disagree with the statement that gender inequality does not really exist (Global media: 55%)

60%

of Spanish people think that feminism has led men to lose economic, political or social power (Global media: 19%), **compared to 46% who do not believe so.**

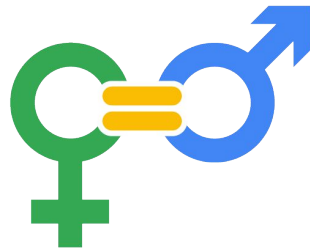
17%

of Spanish people believe that traditional masculinity is threatened today (Global media: 29%), **compared to 37% who do not believe so.**

23%

of Spanish people believe that feminism does more harm than good (Global media: 29%), **compared to 40% who do not believe so**

25%



Violence against women is still stigmatized by a small minority

In 2022, Spanish people is strongly disagrees or tend to disagree that violence against women is often provoked by the victim, compared to 10% who believe, a minority who also think that women often make up or exaggerate claims of abuse or rape (10%)



of Spanish people think that the Covid-19 Panof of Spanish people is strongly disagrees or tend to disagree that violence against women is often provoked by the victim (Global media: 55%)

67%

of Spanish people is strongly disagrees or tend to disagree that women often make up or exaggerate claims of abuse or rape (Global media: 53%)

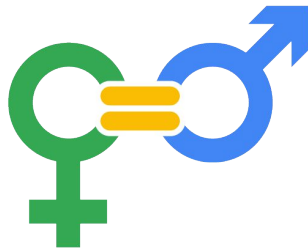
58%

of Spanish people is strongly agree that women should not have to deal with online abuse (Global media: 78%)

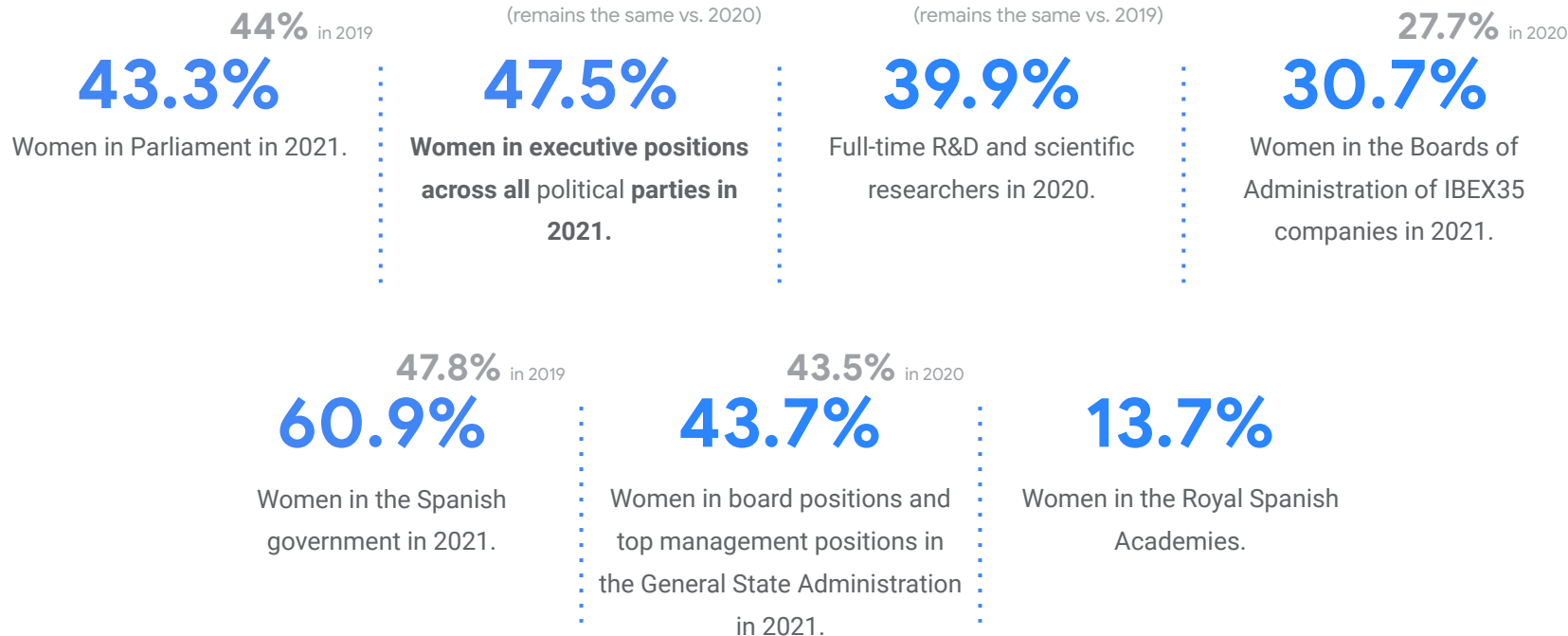
76%

of Spanish people believe that many women overreact to the messages they receive online (Global media: 33%), compared to 35% who do not believe so.

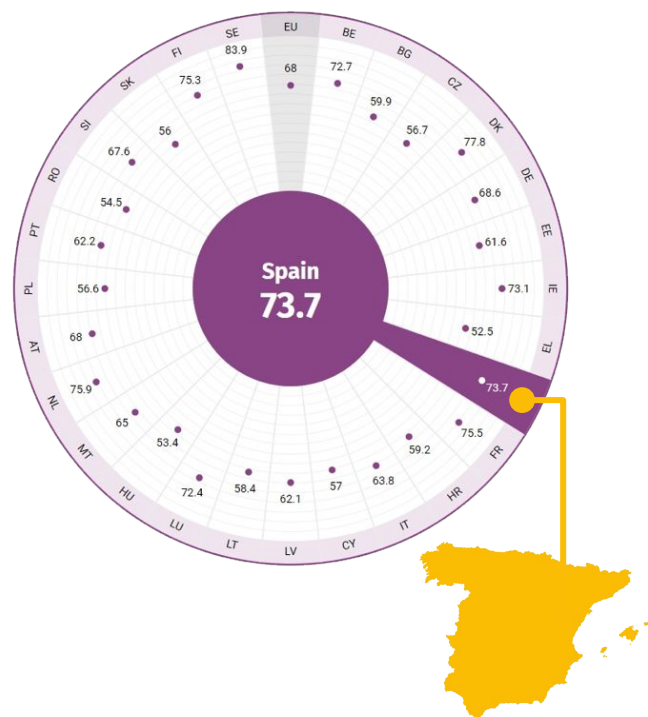
24%



Female representation in sciences, economics and politics.



With a mark of 73.7 (out of 100), Spain holds the 6th position in the Gender Equality Index 2021.



With 73.7 out of 100 points, Spain ranks 6th in the EU on the Gender Equality Index. Its score is 5.7 points above the EU's score. Since 2010, Spain's score has increased by 7.3 points and its ranking has improved by one place. Since 2018, Spain's score has increased by 1.7 points, mostly driven by improvements in the domain of power. The country's ranking has improved by one place.

The Gender Equality Index is a tool used to measure the progress of gender equality in the EU, developed by EIGE.

It gives more visibility to areas that need improvement and ultimately supports policy makers to design more effective gender equality measures.

WORK



ECONOMIC SITUATION



POWER*



* The domain of **power** measures gender equality in decision-making positions across the political, economic and social spheres.

Gender violence continues to be an extremely serious issue. Although in 2021 the number of complaints decreased, there was a large increase in calls to 016.

**1,126**

Women murdered by gender violence confirmed between 1 January **2003** and 31 December **2021**.

44

Women murdered by gender violence in 2020. 57% of these victims were aged 31-50.

87.307

Calls made to 016, the gender violence information phone service, in **2021**. A 10.23% increase compared to 2020.

120.813

Gender violence reports filed with the police in 2020, compared to 150,804 in 2020.



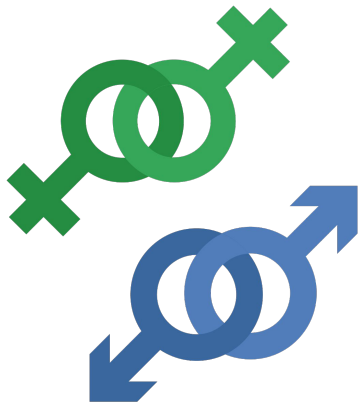
LGTBIQ+

Spain is among the main European countries in LGTBIQ+ legislation, but its position recedes in 2021, moving from 6th position (score 67%) to 10th position (score 64,6%)

In January 2021, the Equality Minister presented a new government draft of a **federal LGR law***, which was backed by civil society.

Eventually, the government draft bill was adopted on 29 June 2021, **setting out self determination for those 16 or over**. Trans people will have to register their application, wait for up to three months, and then re affirm their desire for LGR.

Trans youth between 14-15 will need to apply with their legal guardians present and a judicial process is proposed for those aged 12-13.



10th position
ILGA
EUROPE

In legislative matters regarding the international protection of LGTBIQ+ people according to the study **Rainbow Europe 2021**, with a 64.6% score. The first country is Malta, with a 93.8% score.

(*) Federal LGR Law: [Ley de reconocimiento legal de género](#) (ley para la igualdad real y efectiva de las personas trans y para la garantía de los derechos LGTBIQ+)

In 2020, sexual orientation hate crimes accounted for 19.8% of all hate crimes, and sex and gender discrimination accounted for 7.1%.



In 2020, among the victims of hate crimes of sexual orientation men predominate (78%), while among the victims of discrimination based on sex and gender women predominate (59%).



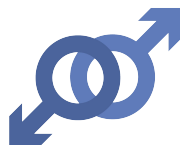
Close relationships or close knowledge of LGTBQ+ people can favor the recognition of this reality, and therefore a greater awareness of their problems.

In 2021, Spain is the European country where more people know gay people.



57%

Spanish citizens say they **have a close relationship with a gay person**, being the European country where more people know people with this gender identity.



30%

Spanish citizens claim **to have a close relationship with a bisexual person**.



10%

Spanish citizens claim to **have a close relationship with a transgender person**. In the **case of non-binary people**, the percentage of Spaniards stands at 8%.

In 2021, Spanish citizens are increasingly involved or related to social issues that concern the LGTBQI+ community, ranking above the global average in many aspects.



22%

Spanish citizens claim **to have attended Gay Pride demonstrations** or similar events, while the global average stands at 13%.



16%

Spanish citizens claim **to have ever attended the wedding of a same-sex couple**, while the global average stands at 11%.



28%

Spanish citizens claim **to have visited a bar or nightclub that caters mainly to LGTBQI+ people**, while the global average stands at 19%.



5%

Spanish citizens claim **to have spoken out against someone who was prejudiced against LGTBQI+ people**, while the global average is well above 30%.

In 2021, Spain is at the top of the global ranking in terms of the right of LGTBIQ+ people to marry and adopt children.

Social acceptance of marriage and adoption

76%

Spanish citizens support **the right of people of the same sex to marry legally**, while the global average stands at 54%.

77%

Spanish citizens support the idea that **same-sex couples should have the same rights when it comes to adopting children**, while the global average stands at 61%.

Right to visibility of the LGTBIQ+ population

73%

Spanish citizens support the idea that **LGTBIQ+ people openly show their sexual orientation or gender identity with other people**, while the global average stands at 51%.

64%

Spanish citizens support **LGTBIQ+ people showing their affection in public**, while the global average stands at 37%.

Although there is a general acceptance of LGTBIQ+ diversity in the social sphere, in 2020 there is also the perception that LGTBIQ+ people do not have the same opportunities as heterosexuals.

69.3%

Spanish heterosexual people believe that being lesbian, gay, bisexual or transsexual is a **disadvantage in employment** and they do not have the same opportunities.



74.5%

Spanish LGTBIQ+ people believe that being lesbian, gay, bisexual or transsexual is a **disadvantage in employment** and they do not have the same opportunities.

In 2020, the discrimination experienced by the LGBTBIQ+ population in the workplace leads to a certain concealment of their own sexual orientation, perhaps as a survival mechanism that in many cases is accompanied by fear.

42.5%

LGBTBIQ+ people have suffered some type of violence speech at work.

44%

LGBTBIQ+ people hide their gender identity to find work.

40%

Trans people say they have been rejected in interviews due to prejudice towards their identity.

90%

LGBTBIQ+ people have considered it an inconvenience to be LGBTBIQ+ time to find a job.

86%

LGBTBIQ+ people consider it necessary to hide their sexual orientation to access a job.

75%

LGBTBIQ+ people have been afraid to reveal their sexual orientation or identity at work.

Suffered violence speech

Hide gender identity to find a job

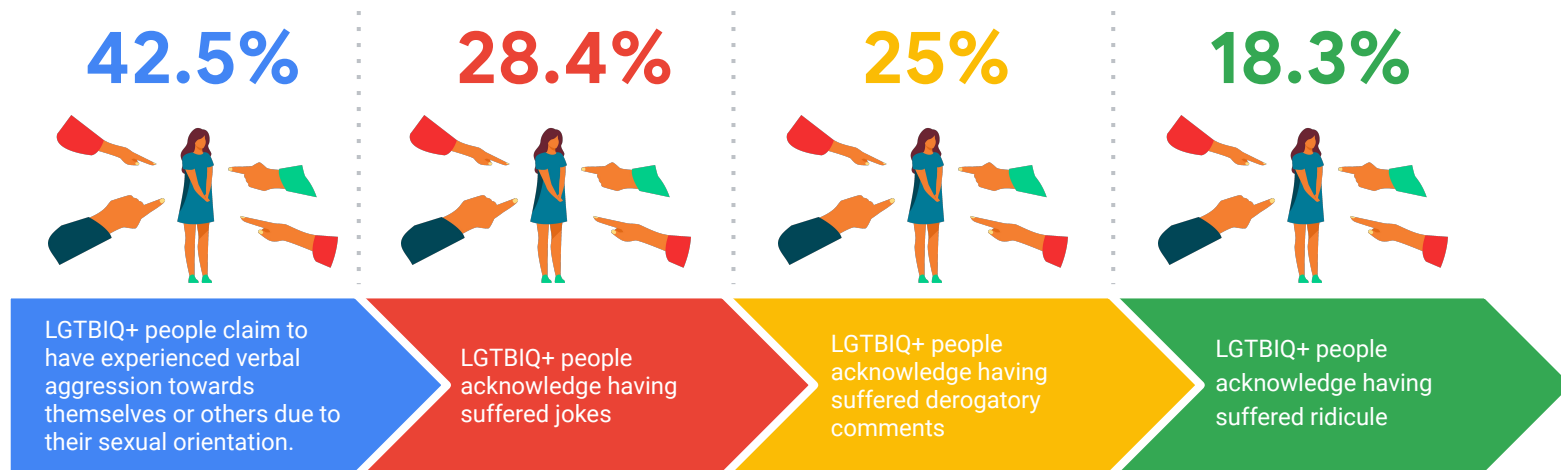
Have been rejected in interviews

Fear of rejection when searching

Hide sexual orientation to access a job

Fear of revealing once at work

In 2020, it seems that verbal aggression persists in a relatively high percentage of LGBTIQ+ people, which manifest themselves in different ways depending on their intensity or aggravation.

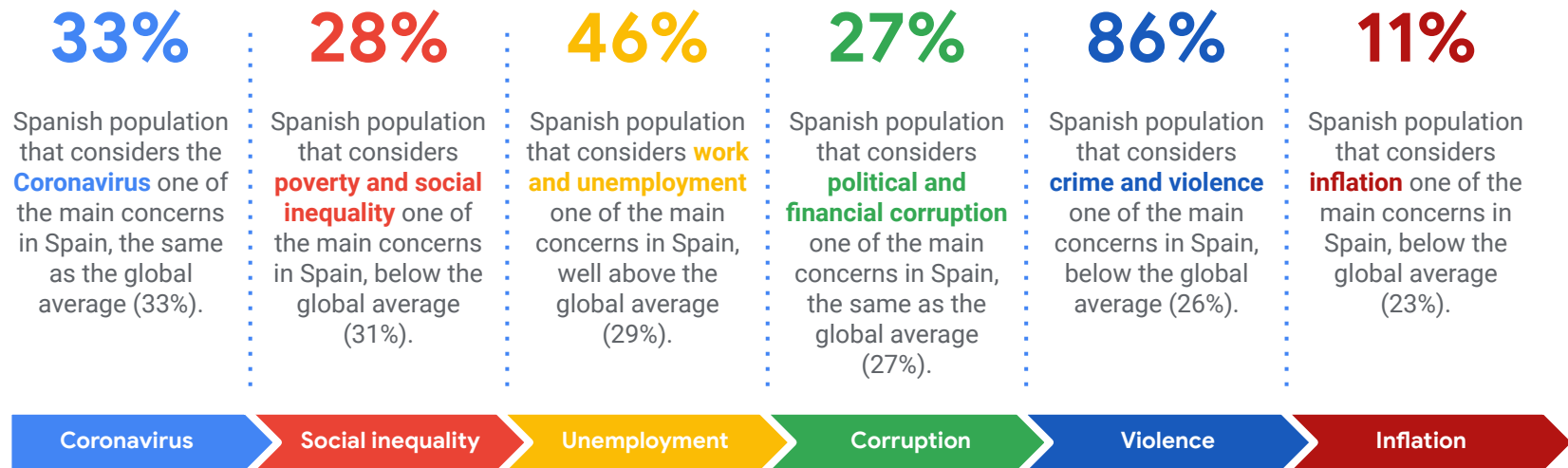




ATTITUDES, LIFESTYLE, VALUES

The main concern in Spain is work and unemployment.

65% of the Spanish population considers that the country is on the wrong path (2 points above the global average), and 72% considers that the current economic situation is bad (9 points above the global average).



In 2022, a progressive and increasingly accentuated ideological polarization is taking place in Spain.

It especially highlights the changes in the field of the ideological right, with a **growing evolution of the extreme right** and a **decline of the traditional right**.



Ideological positioning of the Spanish population based on the voting intention of the representative political parties of the left-right ideological spectrum.

Willingness to change habits in response to climate change.

In 2021, Spanish population acquires a greater awareness of the challenge of climate change and evolves towards a maturity that implies responsible consumption.

91%

Spanish population is willing to **change their habits to fight against climate change.**

57%

Spanish population shows its **willingness to pay more for a sustainable product.** The profile most predisposed to this change is that of young people living in urban environments and in households with monthly incomes of more than 2,400 euros.



The Spanish population considers that the **main cause of climate change is human activity.**

68%

The Spanish population considers that **the consumption of renewable energy in the industrial sector is the measure that most contributes to sustainability,** followed by energy efficiency (87%) and energy recovery from waste (77%).

90%

Skepticism about the ability of government to fight climate change.

In 2021, most of the Spanish population (81%) considers that **climate change has an impact on their daily lives**, which represents an **increase of 5 points compared to 2020 (76%)**.

81%

Spanish population is in favor of **stricter government measures that impose changes in people's behavior** to face the climate emergency.

83%

Spanish population believes it is **more concerned about the climate emergency than its own government**, compared to 75% of the European average.



Spanish population believes that **Spain will not be able to drastically reduce its carbon emissions by 2050**.

58%

Spanish population would be **in favor of a tax on products and services that contribute most to global warming**.

70%

In 2021 temperatures were experienced above the normal value.

2021 was the tenth warmest year since the start of the series in 1961, and the eighth warmest of the 21st century in Spain.

2021 was dry in terms of rainfall, with an average rainfall value over mainland Spain of 569 mm, 89% of the normal value for the month.



In 2021, the daily maximum temperatures were on **average 0.4 °C above the normal value**, while the daily minimum temperatures were 0.5 °C higher than normal, resulting in a daily temperature oscillation 0.1 °C lower than normal.

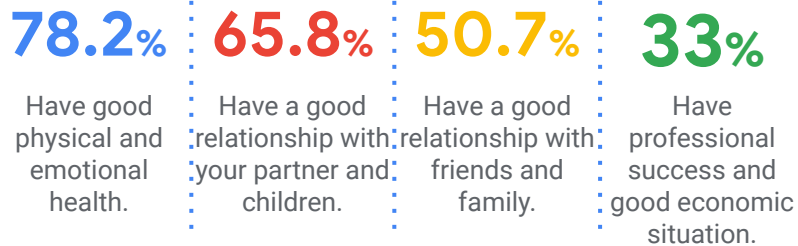
The most **notable thermal anomalies** are +2 °C in large areas of central and western Andalusia, Extremadura, Madrid, Castilla-La Mancha, Catalonia, the Valencian Community, etc., exceeding +3 °C in parts of the Pyrenees.

Health and personal relationships are the most relevant aspects to have a happy life.

In 2021, 70.6% of the Spanish population declares to feel satisfied with life to a high degree.

On the other hand, although **53.9% of the Spanish population does nothing to improve their psychological and emotional well-being**, 46.1% indicate that they have taken some type of measure or action.

Most relevant aspects to having a happy life. % Population 2021



Actions to improve emotional well-being. % Population 2021



Despite relative satisfaction, the experience of anxiety, depression and stress intensifies.

In 2021, 20.6% of the Spanish population has symptoms compatible with a possible case of depression or, at least, moderate symptoms.

25% show symptoms compatible with an anxiety disorder.

15% present suicidal ideation, a percentage that increases to 25.7% in the Spanish population between 15-25 years.

69.6% of the Spanish population acknowledges having experienced stress to some extent.

Main reasons for stress. % Population with stress 2021

39.8%

Labor difficulties: conciliation, changes at work, etc.

30.3%

Tensions with family or friends.

26%

Fear of getting sick or that someone close would get sick.

25.5%

Economic problems.

In 2019, the main reasons for stress were: money management with 43.8%, followed by family tensions with 36%.

Effects caused by stress. % Population with stress 2021

52.7%

Symptoms such as worry, difficulty concentrating, sleep problems, sadness, etc.

27%

Physical problems such as headache, muscle tension, stomach problems, etc.

8.9%

Feeding difficulties

5.4%

Psychosomatic difficulties such as hair loss, dermatological problems, etc.

Different aspects with repercussions on lifestyle.

91%

COUPLE LIFE

Spanish population claims to be **satisfied with their relationship as a couple**, positioning itself as the third country in Europe that most affirms it.

MENTAL HEALTH

35%

Spanish population considers that **mental health is the biggest health problem facing their country**, being the third European country, most concerned about mental well-being.

15%

PHYSICAL ACTIVITY AND EXERCISE

Spanish population declares **not to do any type of exercise**, being the fourth European country where more citizens do not practice any sport.

ECONOMIC RECOVERY

47%

Spanish population believes that the **country's economy will take more than three years to recover after the pandemic**, being the most pessimistic European population behind Romania.





EDUCATION

In 2021 (Q4), 43.5% of the population have attained a low or relatively low level of education, at most completing the first tier of Secondary Education.

Distribution of population aged 16+ by level of education attained.

32.5%

% who completed Higher Education

14.3%

% who only completed the Second tier of secondary education, including further education guidance.

-Illiterate: 1.3%.
-Incomplete primary education: 4.3%.
-Vocationally oriented upper secondary education (includes post-secondary education): 8.4%

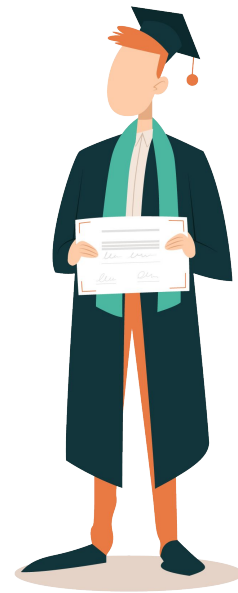
28.6%

% who only completed the First tier of Secondary Education or similar.

10.6%

% who only completed Primary Education.

+ 4.3% population who **did not complete** Primary Education.



In 2021, early school leaving in Spain stood at 13.3%, which represents a decrease of 2.7 points compared to 2020.

16.7%

Of men leave schooling early, compared to 9.7% of women. The difference of 7 points means that male abandonment is 72% higher than that of women.

26.5%

of the foreign population leaves education early, compared to 11.4% of the population with Spanish nationality.

14.1%

of young people between the ages of 15 and 29 do not study or work, a figure 3.2 points lower than that of 2020. The percentage for men is higher (14.4%) than for women (13.8%).

78.8%

21% of the population aged 20-24 have attained at least the level of the second stage of Secondary Education, with a clear difference between women (83.7%) and men (74.2).



Early school leaving 2021

Early school leaving 2021
foreign population

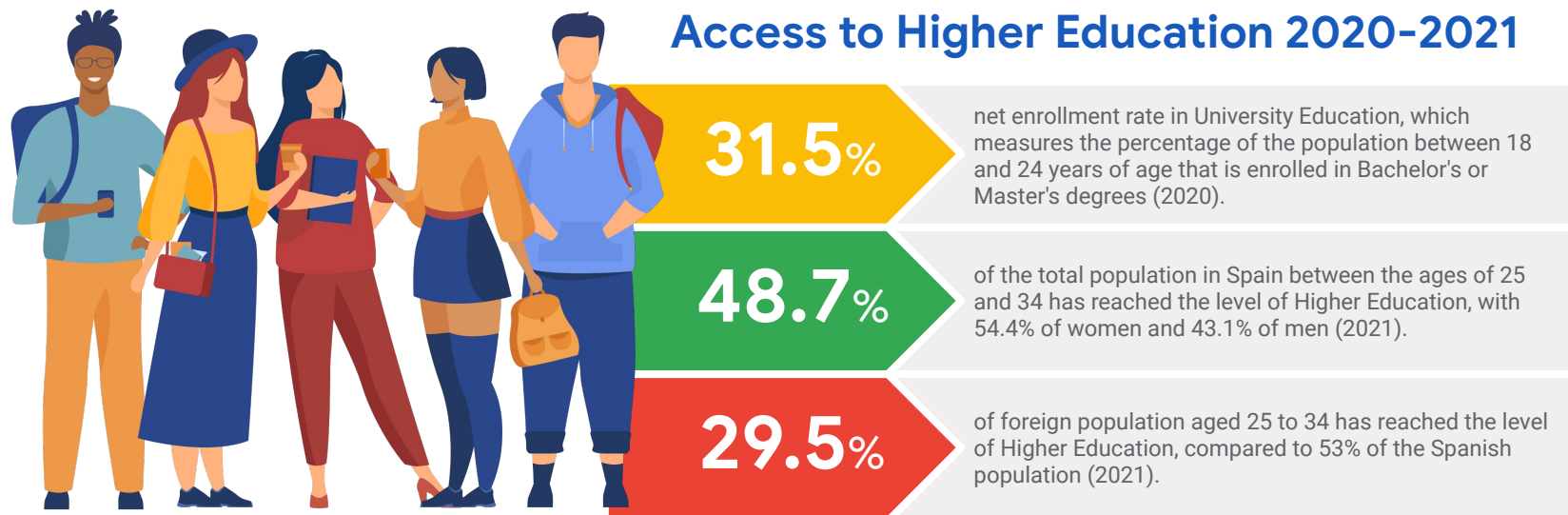
Population not studying or
working
and not working 2021

Completion of the
second tier of secondary
education 2021

The Spanish university population is above the European average.

In 2021, 48.7% of the population in the age group of 25 to 34 years has reached the level of Higher Education, for above the European average of 2020 (40.5%).

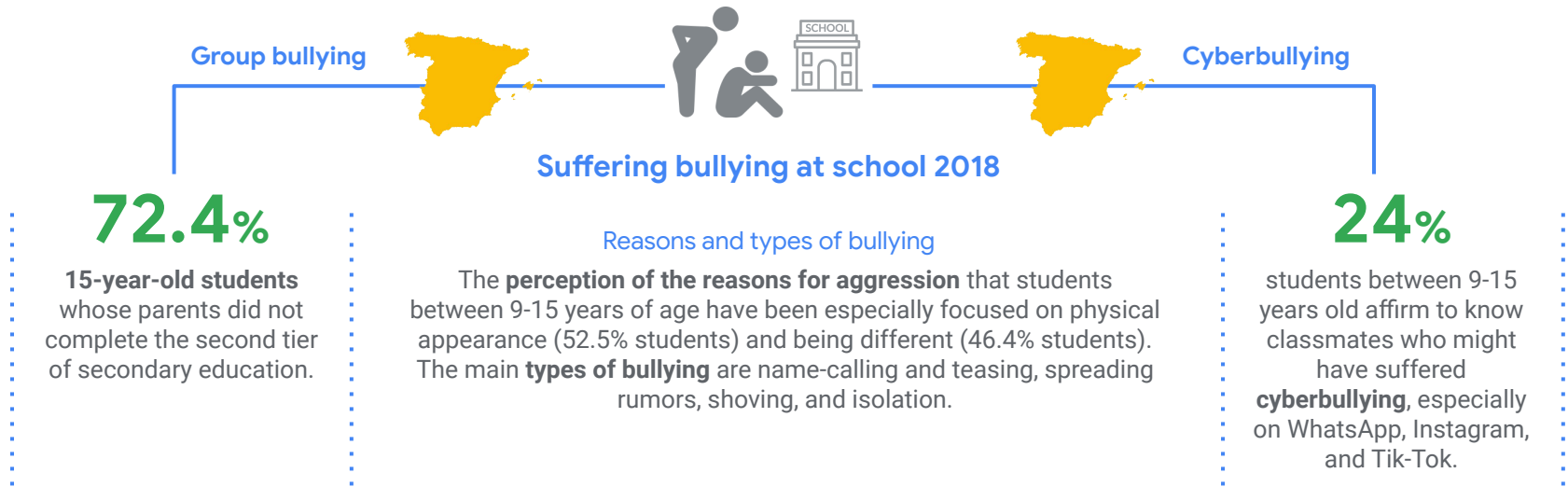
This indicator exceeds the European objective of completion of higher education set for 2030 in which it is set to be at least 45%.



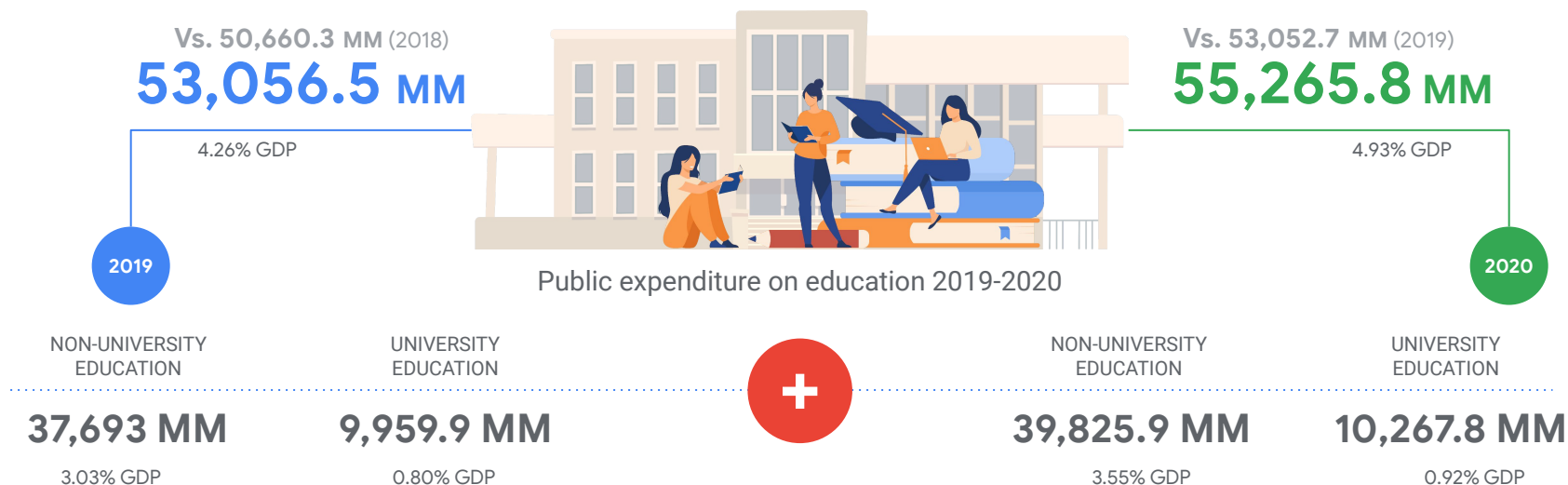
The incidence of bullying decreases during 2020-2021.

In 2020-2021, 15.2% of students in Spain between 9-15 years old believe that there are classmates in their class who are currently being bullied, compared to 34.1% who believed it in 2019.

And 21.8% acknowledge having been able to participate in some situation of bullying or cyberbullying without realizing it.



In 2020, public expenditure on education increased by +4.1% compared to 2019. This increase is found in expenditure linked to both non-university education (+5.7%) and university education (+2.8%).

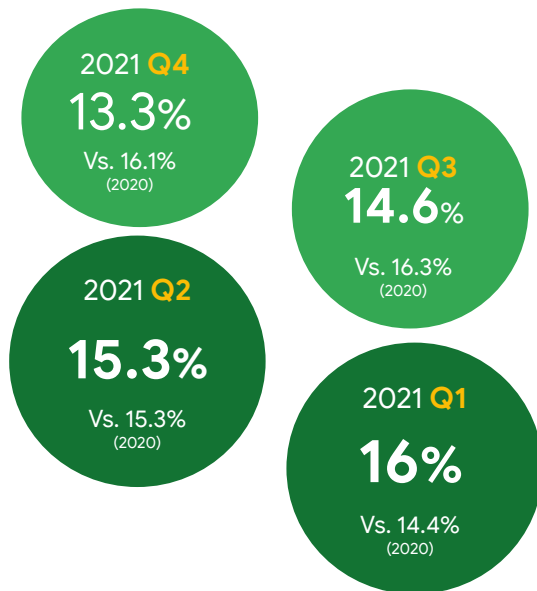


SOCIO-ECONOMIC CLASS

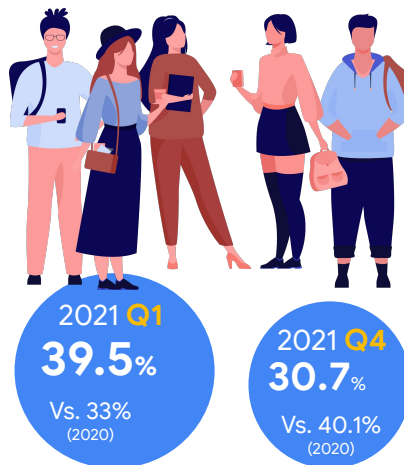
Throughout 2021 there has been a progressive decrease in the unemployment rate, standing at 13.3% at the end of the year, 2.8 points less compared to the end of 2020.

The unemployment rate in people under 25 has also decreased during 2021, 9.4 points less compared to the end of 2020.

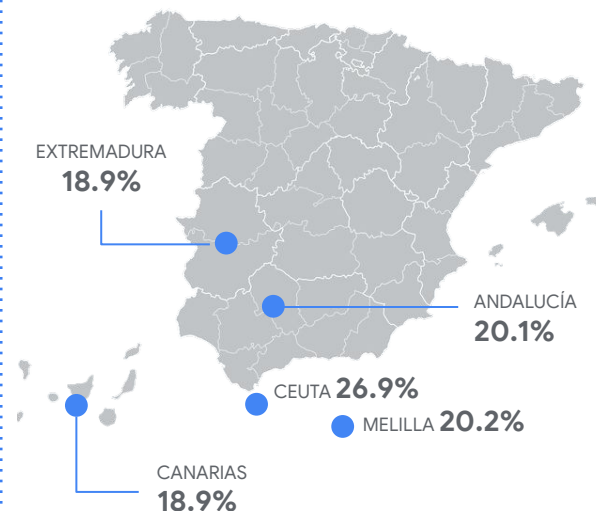
UNEMPLOYMENT RATE 2021



UNEMPLOYMENT RATE 2021 PEOPLE AGED UNDER 25



REGIONS WITH HIGHEST UNEMPLOYMENT RATES 2021 Q4





In 2020 there is a change compared to 2019: the average annual income of the household and people is higher than the average annual expenditure.

The average expenditure per household decreased -10.7%, being the sectors that decreased the most: restaurants and hotels, leisure and culture, transport, clothing and footwear.

On the other hand, food and beverages increased by 6.8% and housing, water, electricity, gas increased by 1.9% (35.6% of total household spending).

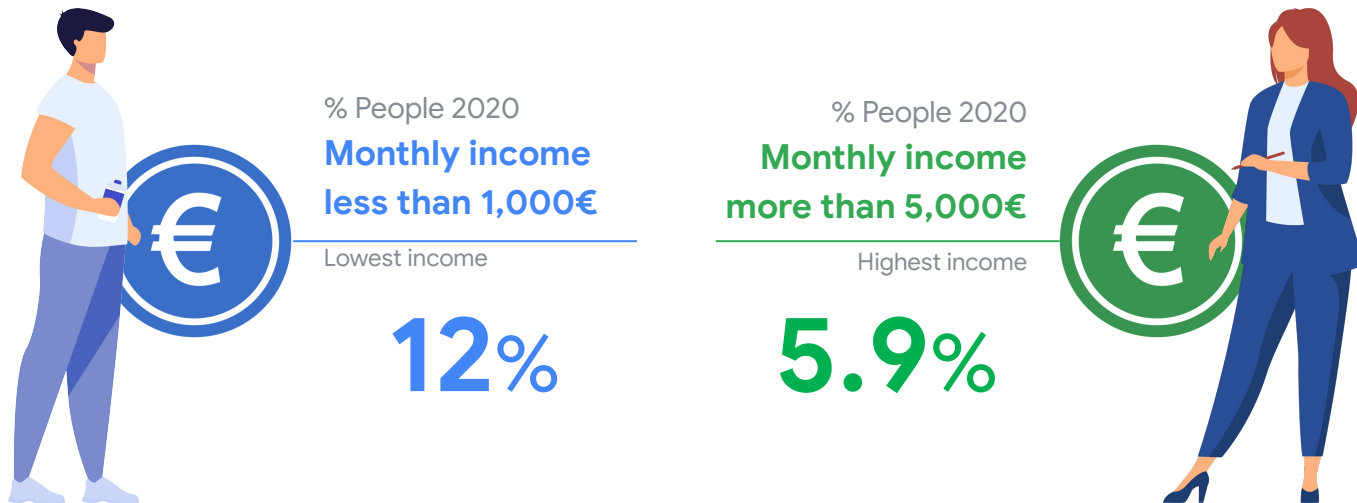
NOTE: Income per person is obtained, for each household, by dividing total household income by the number of household members. Income per consumption unit is obtained, for each household, by dividing total household income by the number of consumption units. The distribution of persons is taken.

	 PER HOUSEHOLD	 PER PERSON
Average annual income 2020	60,690 € +5.1%	12,292 € +5%
Average annual expenses 2020	29,996 € -10.7%	10,848 € -10.7%
Average income of young people aged 16-29 2020		11,031 €

Monthly income is imbalanced.

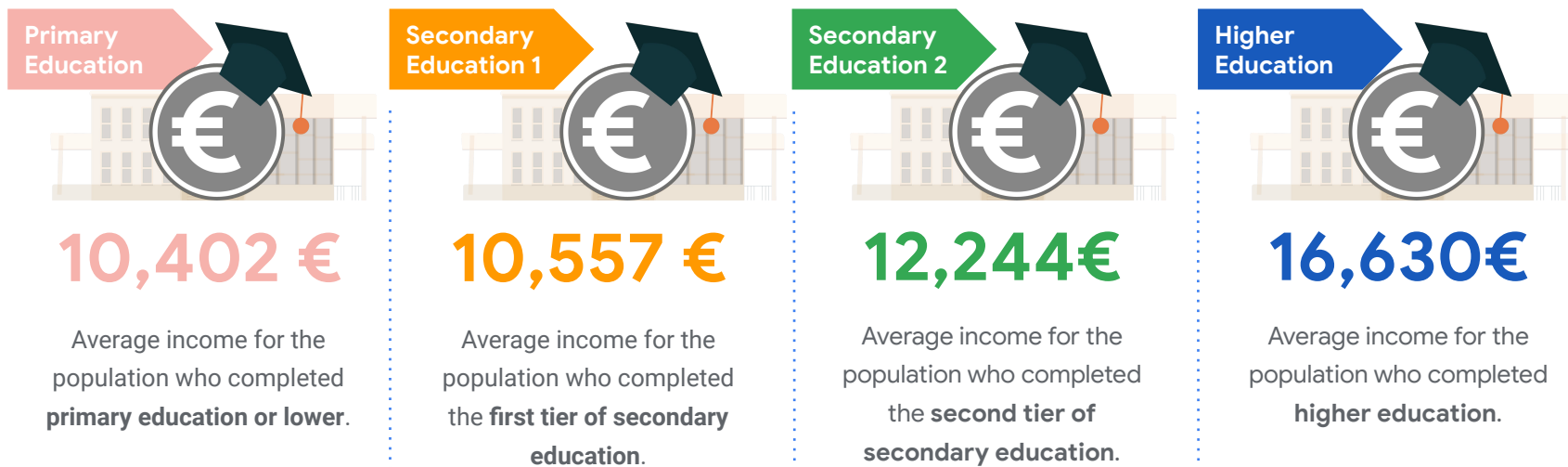
There is an **imbalance in terms of population distribution between those who earn the least and those who earn the most, producing an increase in the proportion in both segments compared to 2019.**

The monthly income level range with the highest proportion of people is between 3,000-4,999 euros, going from 19.5% in 2019 to 23.5% in 2020.



In 2020, the difference in average income between those who only completed primary education and those who completed higher education is 6,228 euros, minimal reduction compared to 2019.

Furthermore, only those with higher education earn above the national average income.



NOTE: Income per person is obtained, for each household, by dividing total household income by the number of household members. Income per consumption unit is obtained, for each household, by dividing total household income by the number of consumption units. The distribution of persons is taken.

Inequality expressed through income.

In 2020, 9.5% of the Spanish population, some 4.5 million people, live in **severe poverty**. In other words, almost half of the poor population lives in severe poverty.

In 2020, the combined income of the **richest 10%** of the population multiplies by 10.5 that of the poorest 10%.



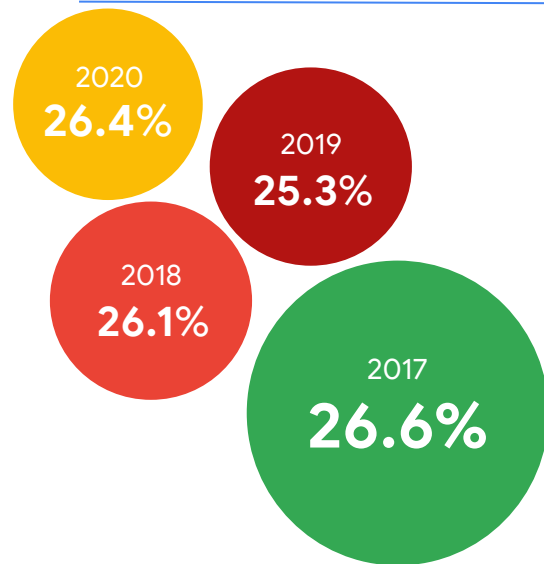
In 2020, the income of the richest 20% of the population is **5.8 higher** than that of the poorest 20%.

In 2020, the richest 10% of the population **earn a quarter** (23.3%) of the income of the entire population.

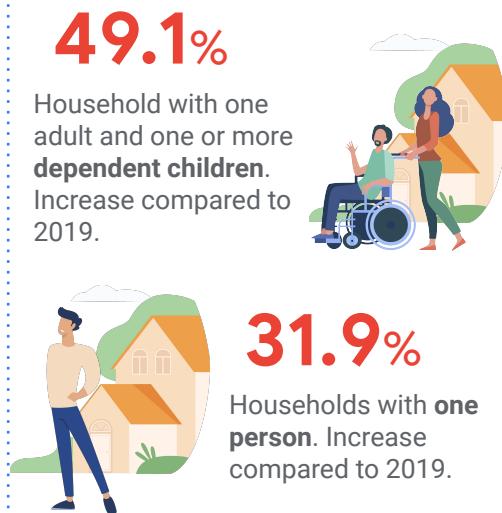
Population at risk of poverty and social exclusion.

In 2020, a total of **12,505,534 million people (26.4%)** were at risk of poverty and/or social exclusion. Furthermore, this indicator is not homogenous across the population and **significant variations between different social groups** are observed.

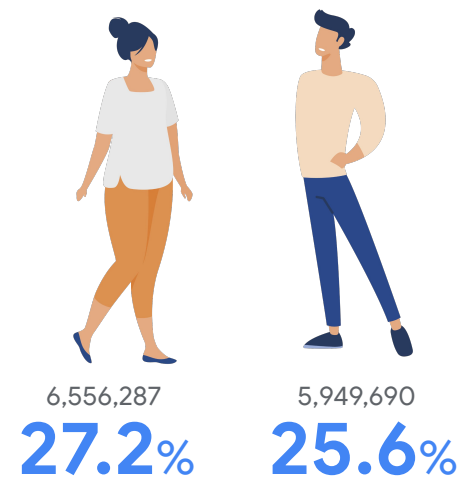
% POPULATION AT RISK OF POVERTY AND EXCLUSION



RISK OF POVERTY PER TYPE OF HOUSEHOLD 2020

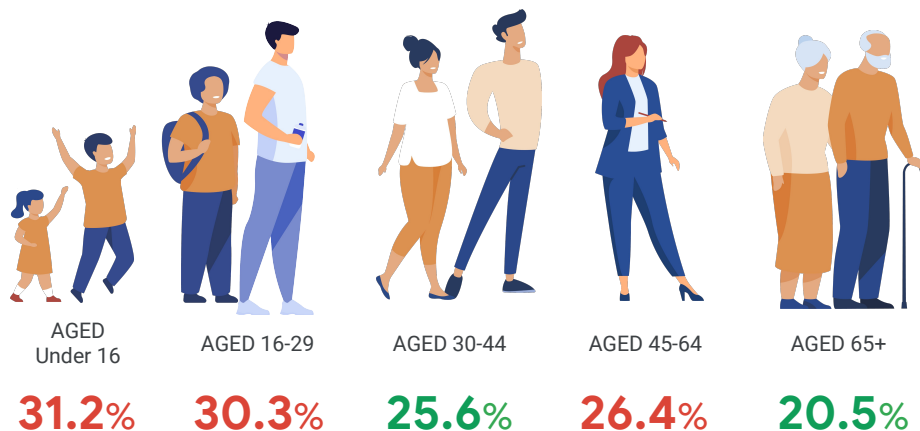


RISK OF POVERTY PER GENDER 2020

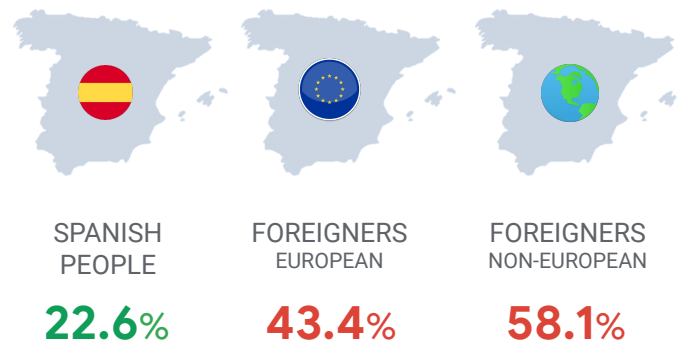


In 2020, the age group with the highest proportion of the population at risk of poverty and exclusion corresponds to those under 16 years of age, but the group whose percentage increases the most is those over 65 years of age, 4.8 points more than in 2019.

RISK OF POVERTY BY AGE 2019



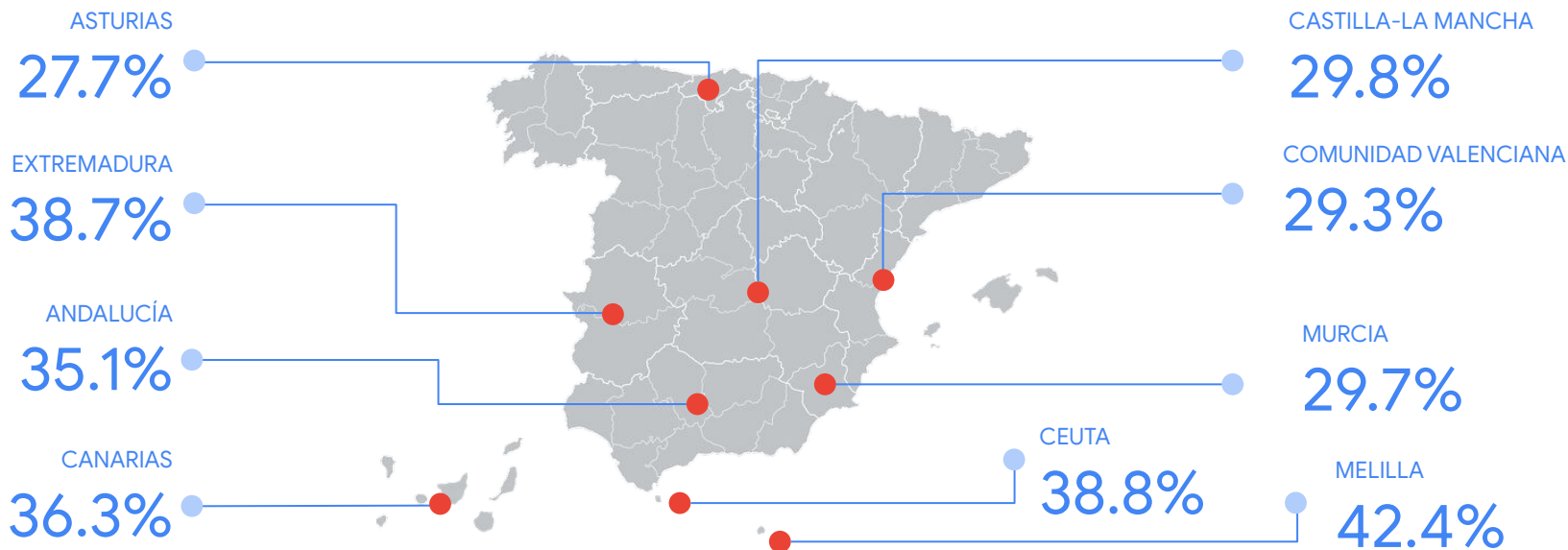
RISK OF POVERTY BY AGE 2019



The population at risk of poverty is much more prominent in the south.

In 2020, there were nine Communities with a rate of population at risk of poverty above the general average in Spain.

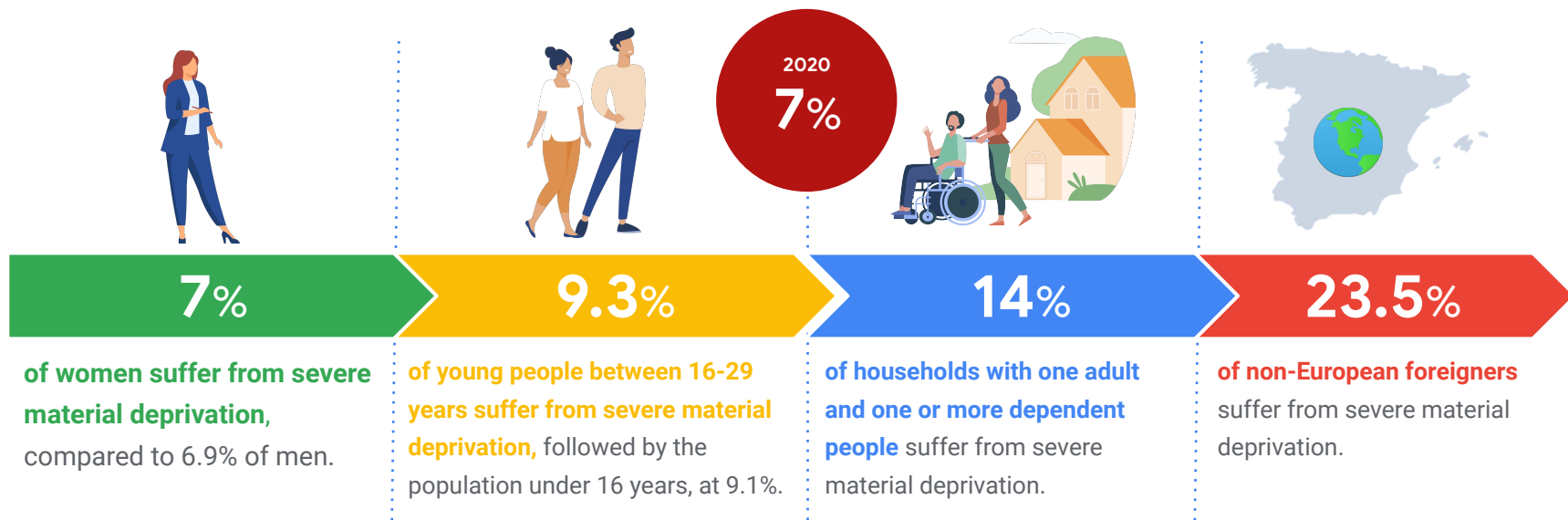
And there continues to be a great territorial polarization between North-South of Spain in terms of the proportion of the population at risk of poverty and social exclusion.



Population with severe material deprivation.

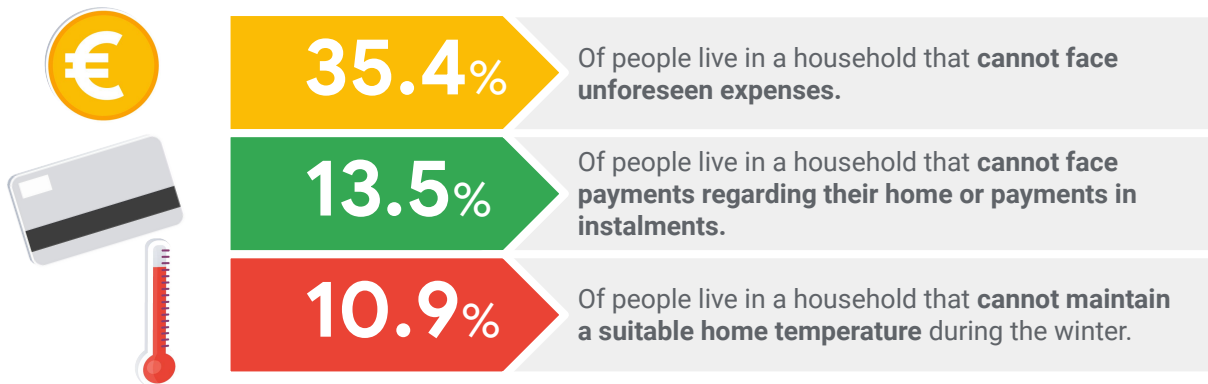
Severe material deprivation refers to people living in households that cannot face four or more elements of consumption out of the nine that are considered essential in European territory. It is an expression of severe vulnerability.

This level **has decreased by 0.7 points in 2019 compared to the previous year**, with a total of **approximately 2.2 million people** in this situation.



There is a high percentage of people who cannot face unforeseen expenses, which gives rise not only to great economic instability but also emotional and social instability.

Furthermore, **45.2% of the population has some kind of difficulty making ends meet, with a reduction of 4.1 points compared to 2019**. But within this group there is an increase in the proportion of people who make ends meet «with great difficulty», going from 7.8% in 2019 to 10% in 2020.



DIGITAL EXCLUSION

Widespread use of the Internet.

Undoubtedly, **there is widespread access and use of the Internet. But there is a 4.1% of households that lack Internet**, stating reasons such as low utility, lack of knowledge and high cost.



2021



93.9%

Of people aged 16-74 have used the Internet in the past three months (0.7 points higher than in 2020). This represents a total of 33.1 million people.

91.8%

Of people aged 16-74 go online at least once a week. 85.8% go online daily and 82.7% several times a day.

95.9%

Of households has Internet access, with 82.9% having a landline broadband connection (fibre, cable...), and 13% having a mobile broadband connection (3G, 4G).

4.1%

Of households without Internet access, with reasons such as «Not useful» (77.2%), «Lack of knowledge» (57.4%) and «High costs (26.4%)».

Daily Internet use is increasingly widespread.

In fact, almost the entire population up to the age of 34 uses the Internet at least 5 days a week.

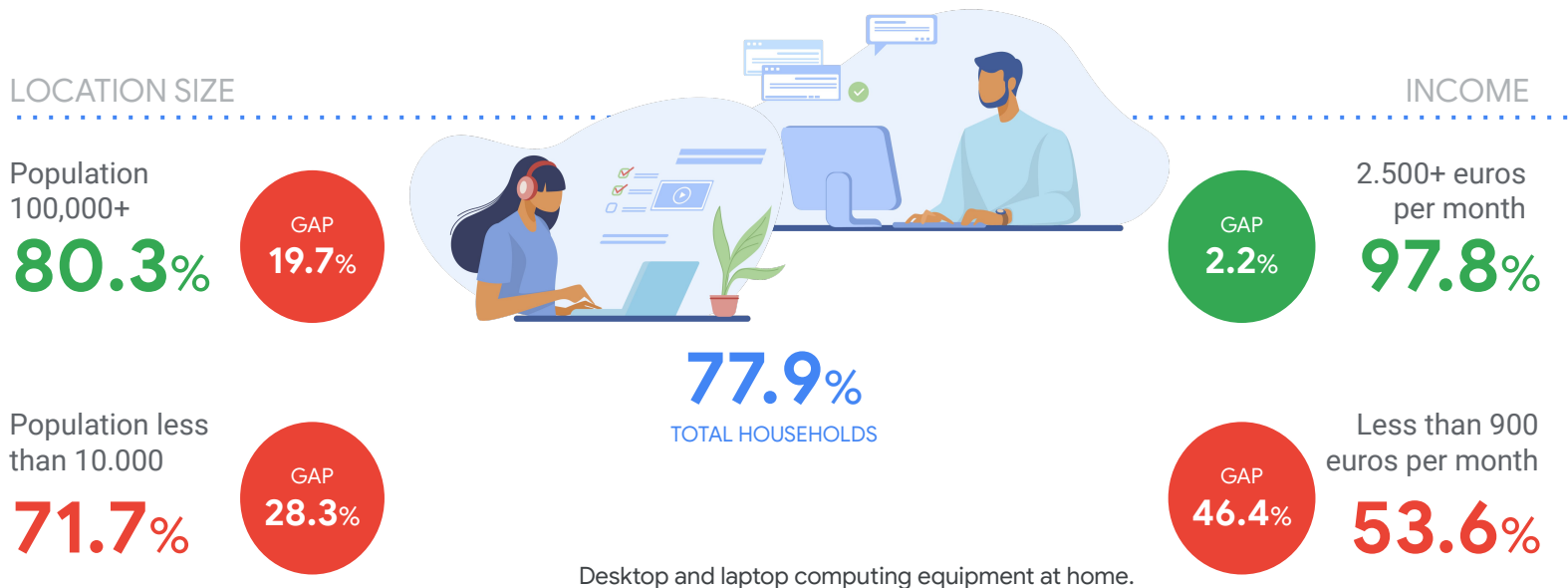
In 2021 there has been an increase in middle age and older people, although there is a high proportion of people over 65 who do not use the Internet daily.



Daily Internet use by age ranges 2021.

77.9% of households have at least one desktop or laptop computer.

However, there is a **significant digital gap based on the size of location and monthly income**. The gap becomes wider as location size decreases. Similarly with income, **the gap widens as monthly income decreases**, with a 46.4% gap for households with income below 900€.



Great advances have been made throughout 2020 in regard to broadband services, producing progressive improvements in rural areas.

Broadband coverage with a speed of 30Mbps reached 95% of the population in 2020 and 90% in **rural areas**. During 2020, the rural digital divide has been reduced by four percentage points.

Ultrafast broadband networks (100 Mbps) reached **87.6% of the population in 2020**, while rural coverage stood at 63%.



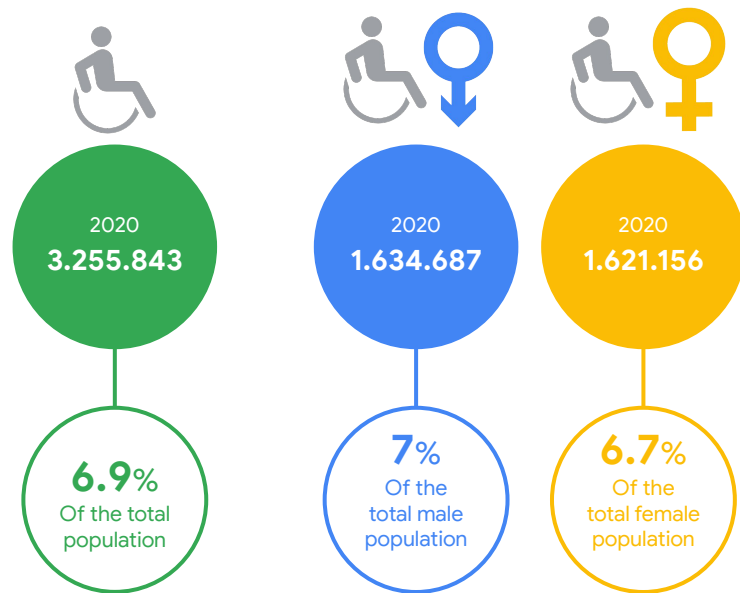
In 2020, **fiber optics in the home** (FTTH) reached 84.9% of the Spanish population, almost one million more homes than in 2019, while population **coverage in rural areas** was 60%.

Between 2021 and 2023, **ultra-fast speed coverage** (100 Mbps) will reach 92.7% of the Spanish population and 82.5% in **rural areas**.

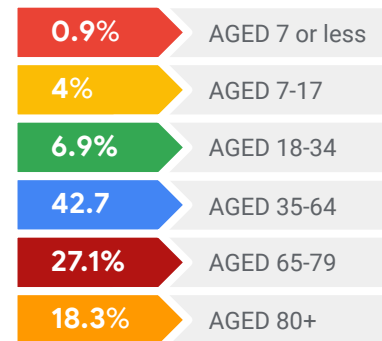
(DIS)ABILITY

Disabled people are those who have been certified as having a level of disability of 33% or more.

In 2019 they amount to 6.9% of the population, going from 3,163,992 in 2018 to 3,257,058 in 2019. The regions with the **highest proportion of disabled population** (over the total population of each region) are **Asturias, Cantabria, Murcia, Ceuta and Melilla**.

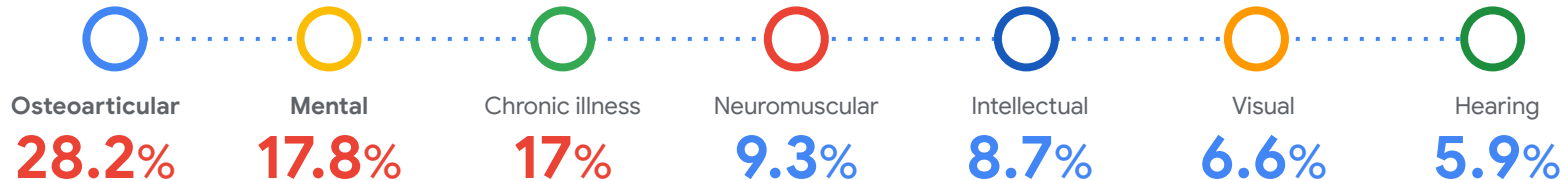


Distribution



In 2020, the largest proportions of disabled people based on type are found in osteoarticular disorders, mental disabilities and chronic illnesses.

The largest volume of disabled people is found in people **between 35-64 years old** with **osteoarticular disability** (357.305), followed by people between **35-64 years old** with **mental disability** (295.773).



Employment and disabled people in 2020.



In 2020, there were **1,933,400 disabled people of working age** (aged 16-64). This amounts to 6.3% of the total population of working age.

Within the working-age population, **663.900 were active**, an increase of 4% compared to 2019. The disabled **working population** amounted to **516,300 people**.

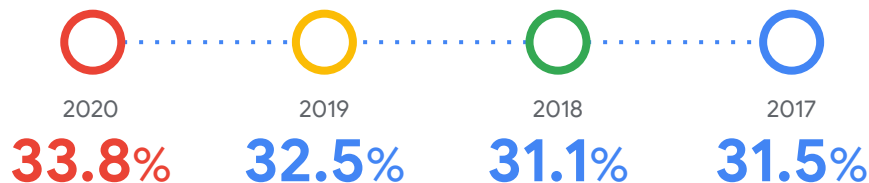
89.6% of disabled people who were employed did so as **waged workers, and self-employed 10.3%**. **81%** of those employed did so **in the services sector** and **75% worked full time**.

Their **unemployment rate** decreased by 1.7 points in 2020, amounting to **22.2%**: this is about 7 points higher than the unemployment rate of non-disabled people.

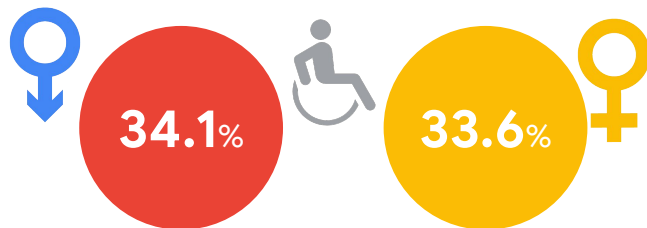
Disabled population at risk of poverty and social exclusion.

The evolution of the disabled population at risk of poverty and social exclusion follows an upward trend. But there are relevant nuances. In 2020, while the proportion of men with disabilities decreases, **in the case of women there is an increase of 3.7 points compared to 2019**. While the proportion of people with disabilities between 18-64 years of age decreases, **in the case of disabled people over 65 years of age there is an increase of 5.4 points compared to 2019**.

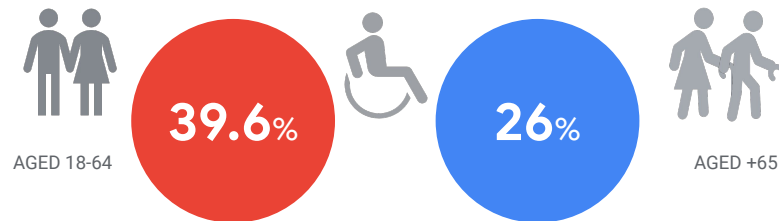
% DISABLED POPULATION AGED 16+ AT RISK OF POVERTY



RISK OF POVERTY PER GENDER 2020

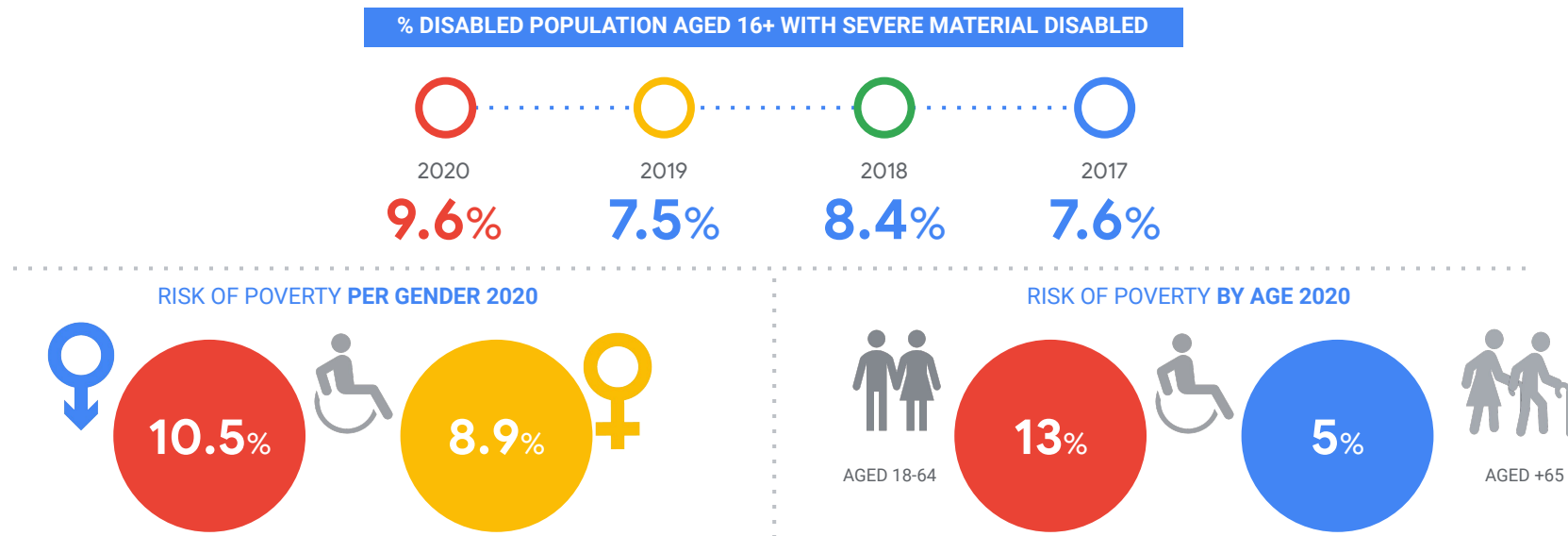


RISK OF POVERTY BY AGE 2020



Disabled population and severe material deprivation.

Disabled people are much more likely to suffer severe material deprivation than the non-disabled people. In addition, in 2020 there has been a growth of 2.1 points compared to 2019. Likewise, there has been an increase in the proportion of men and women with disabilities, as well as in the population between 18-64 years of age and those over 65 years of age.



Nearly half the disabled population cannot face unforeseen expenses, suffering economic, emotional and social instability as a result.

In addition, in 2020 there is a significant increase in the disabled population that cannot afford to pay expenses related to housing or mortgage payments, going from 8.5% in 2019 to 14.3% in 2020.



29.7%

Disabled people who experience some difficulty or much difficulty to make ends meet.



45.8%

Disabled people living in households who cannot face unforeseen expenses.



14.3%

Disabled people living in households who cannot face the payment of expenses related to housing or mortgages.



PECULIARITIES & OUTLIERS

Number of companies by size in December 2021.



TOTAL
2,943.385

+1.59%

ANNUAL VARIATION RATE

COMPANIES WITHOUT
WAGED WORKERS

1,610.995

+0.58%

ANNUAL VARIATION RATE

MICRO-ENTERPRISES
1-9 WAGED
WORKERS

1,143.857

+2.20%

ANNUAL VARIATION RATE

COMPANIES WITH
10-49 WAGED
WORKERS

158,477

+7.19%

ANNUAL VARIATION RATE

COMPANIES WITH
50-249 WAGED
WORKERS

25.062

+5-15%

ANNUAL VARIATION RATE

COMPANIES WITH
250+ WAGED
WORKERS

4.994

5%

ANNUAL VARIATION RATE

Decrease in the number of cash machines, but cash withdrawal operations increase. There is a large increase in purchase operations through AT Payment Terminals.



NUMBER OF CASH
MACHINES

47.639

-3.72%

YEAR-ON-YEAR VARIATION

CASH WITHDRAWAL
OPERATIONS AT
CASH MACHINES

652,850.000

+4.51%

YEAR-ON-YEAR VARIATION



NUMBER OF PAYMENT
TERMINALS

2,210.994

+6.61%

YEAR-ON-YEAR VARIATION

PURCHASING
OPERATIONS AT
PAYMENT TERMINALS

6,101.341.000

+28.83%

YEAR-ON-YEAR VARIATION

In 2021, 3.45% of the Spanish population and 54.6% of Spanish municipalities do not have access to a bank branch.



1,638,048

Total number of
**people without
access to a bank
branch in Spain.**

412,855

Total number of
**people without
access to a bank
branch in Castilla y
Leon** (Community with
the highest volume).



4,443

Total number of
**Municipalities
without access to a
bank branch in
Spain.**

1,875

Total number of
**Municipalities without
access to a bank
branch in Castilla y
Leon** (Community with
the highest volume).

Thank You

Karina Sanmartin
Curation Practice Lead at Ipsos UU Spain

Eva Lopez
Client Manager Director at Ipsos Creative Excellence Spain

Ipsos, 2022.